

Packing List

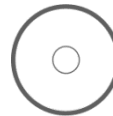
In addition to this guide, the package includes the following items:



XP-8038-CE6
 XP-8138-CE6
 XP-8338-CE6
 XP-8738-CE6



CF slot with
 a CF card



Win-GRAF PAC &
 Software Utility CD



Screw Driver

Resources

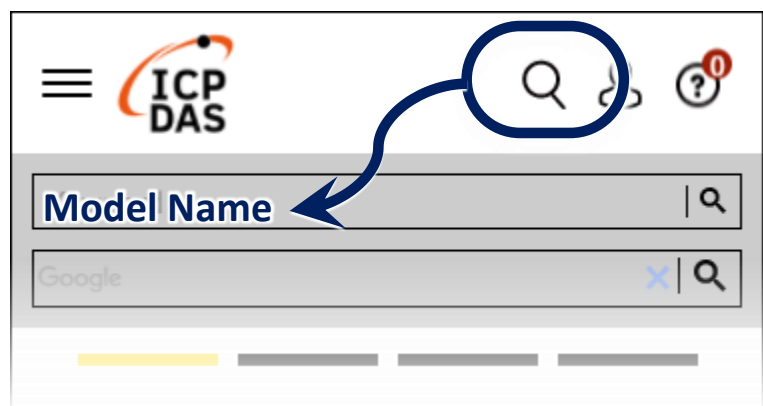
How to search for drivers, manuals and spec information on ICPDAS website.

Technical Support

service@icpdas.com

www.icpdas.com

- For Mobile Web



- For Desktop Web

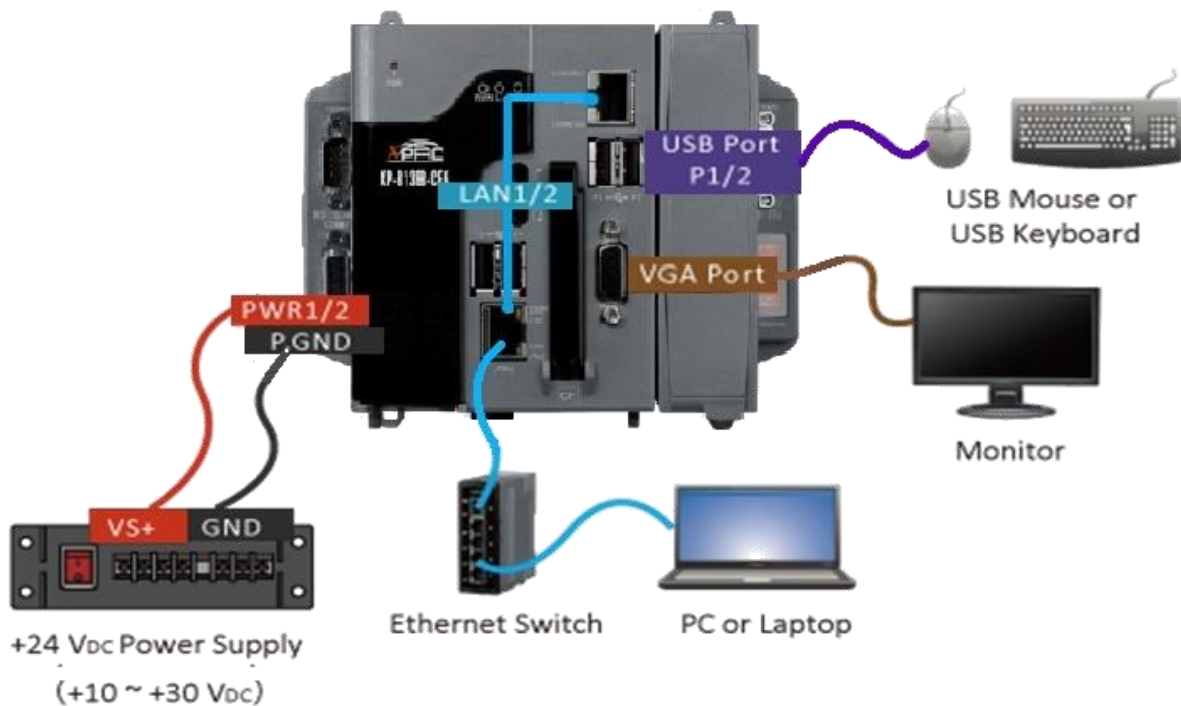


1 Configuring the Boot Mode

Before starting any installation, be sure that the switch is placed in the 『0』 position.



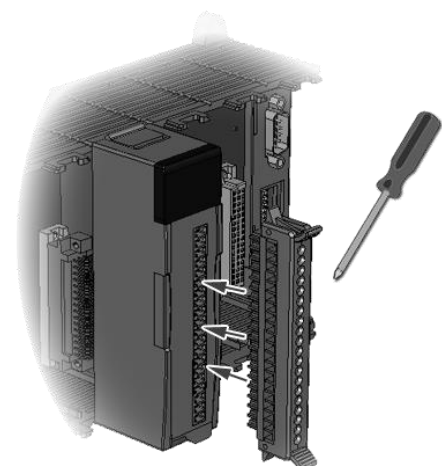
2 Connecting to PC, Monitor and Power Supply



3 Inserting the I/O Module and Wiring Connection

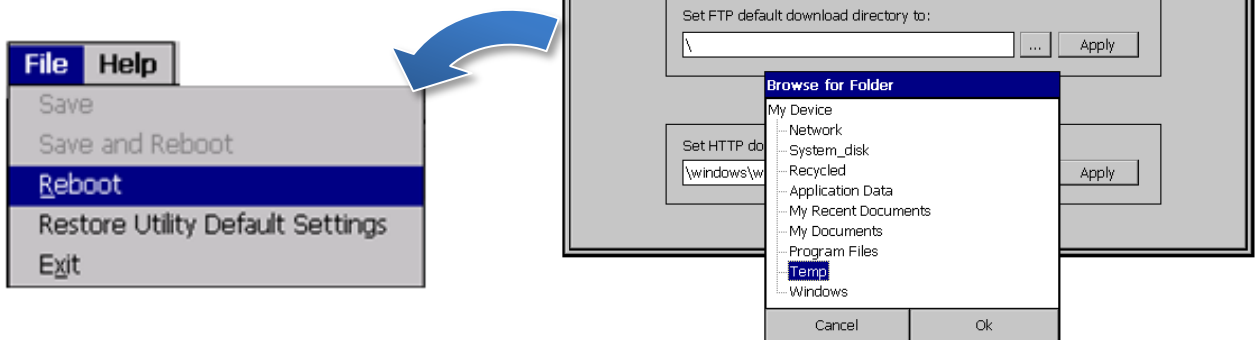
XP-8x38-CE6 has 1/3/7 I/O expansion slots and only supports high profile I-8K and I-87K series I/O modules.

For more information about this expansion I/O modules, please refer to the website.




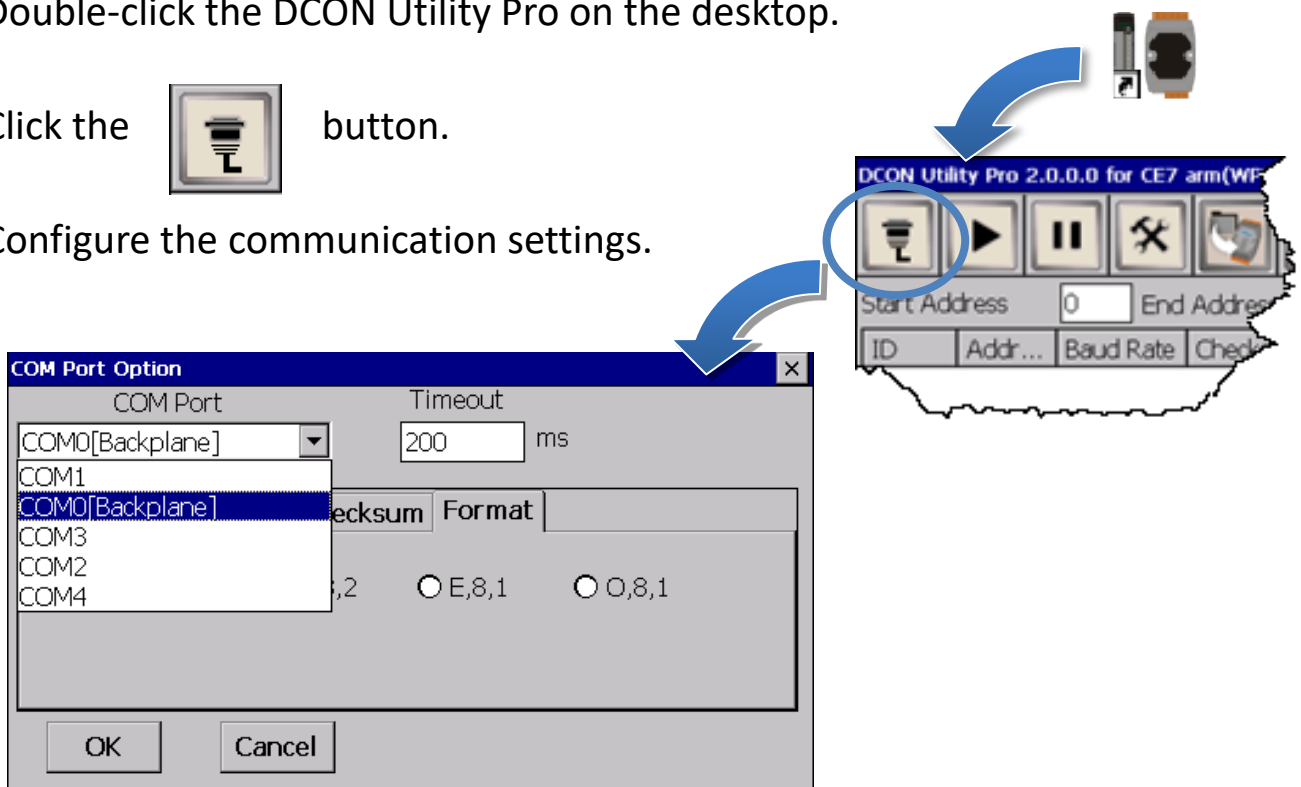
4 Using PAC Utility to Manage the XP-8x38-CE6

- 1) Double-click the PAC Utility on the desktop.
- 2) Configure IP address (DHCP), FTP Server, Auto Execution files, etc.
- 3) Reboot the XP-8x38-CE6 for changes to take effect.



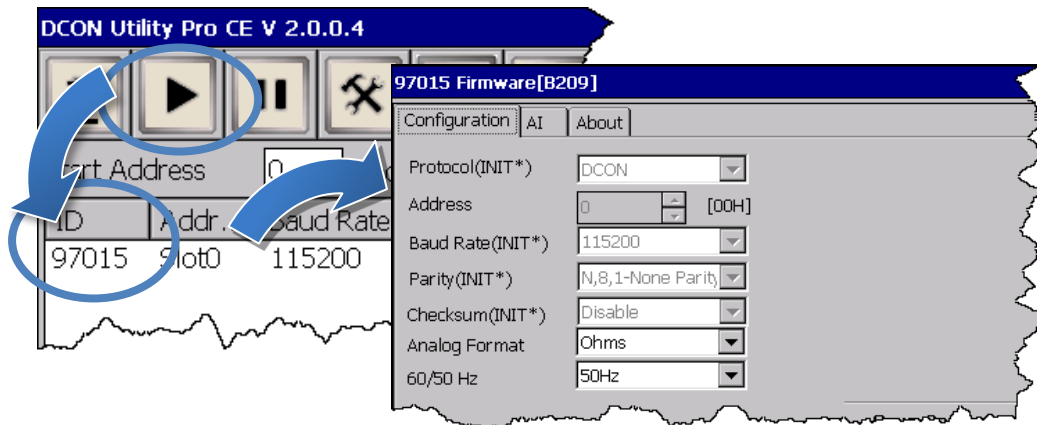
5 Using DCON Utility Pro to Configure I/O Modules

- 1) Double-click the DCON Utility Pro on the desktop.
- 2) Click the  button.
- 3) Configure the communication settings.



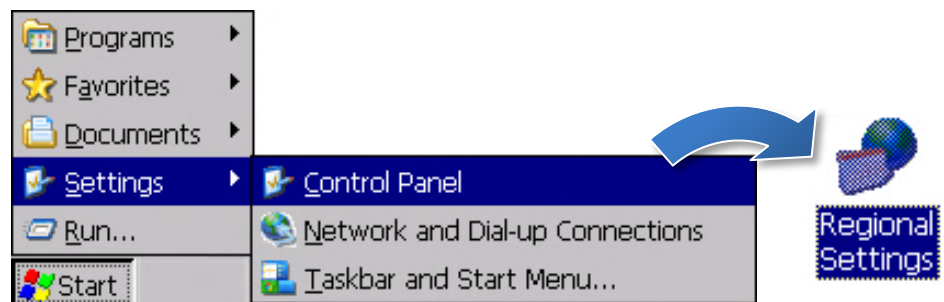
4) Click the  button.

5) Click the module name to configure the I/O module.

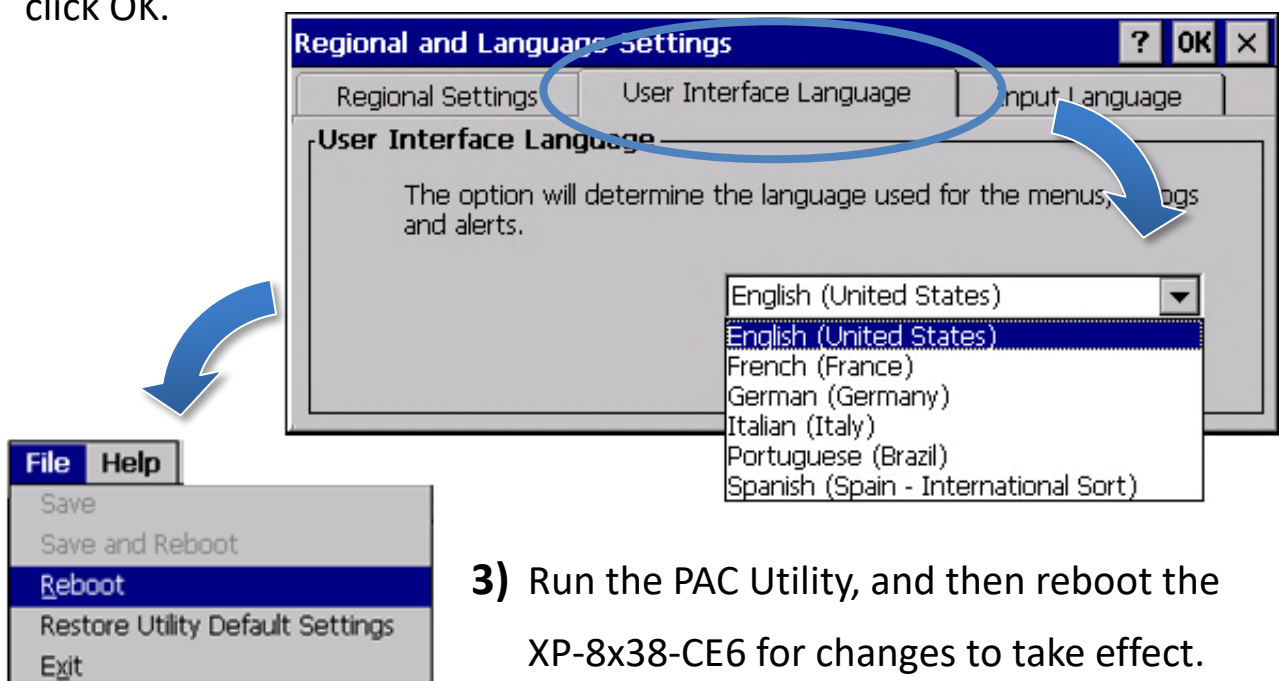


6 Changing the User Interface Language

1) Click Start menu, point to Settings, click Control Panel, and then click Regional Settings.



2) Click User Interface Language tab, choose to your local language, and then click OK.



3) Run the PAC Utility, and then reboot the XP-8x38-CE6 for changes to take effect.