

IWSPAC-x201-CE7

Quick Start

(CE7 Based IWSPAC)

Version 1.0.0, March 2015

Usage information for

IWS-2201-CE7

IWS-3201-CE7

IWS-4201-CE7

IWS-5201-CE7

IWS-6201-CE7

Written by Ian Chien

Warranty

All products manufactured by ICP DAS are under warranty regarding defective materials for a period of one year, beginning from the date of delivery to the original purchaser.

Warning

ICP DAS assumes no liability for any damage resulting from the use of this product. ICP DAS reserves the right to change this manual at any time without notice. The information furnished by ICP DAS is believed to be accurate and reliable. However, no responsibility is assumed by ICP DAS for its use, not for any infringements of patents or other rights of third parties resulting from its use.

Copyright

Copyright © 2015 by ICP DAS Co., Ltd. All rights are reserved.

Trademark

The names used for identification only may be registered trademarks of their respective companies.

Contact US

If you have any problem, please feel free to contact us.

You can count on us for quick response.

Email: service@icpdas.com

Contents

Contents	3
About User Manual.....	4
1. Changing User Interface Language.....	5
2. Downloading IWS Project to IWSPAC.....	7
3. Using PAC Utility to Manage IWSPAC	10
3.1. Functions of PAC Utility.....	11
3.1.1. Menu Bar – File.....	12
3.1.2. Property Tab – IP Config.....	13
3.1.3. Property Tab – Network	14
3.1.4. Property Tab – Device Information.....	16
3.1.5. Property Tab – Auto Execution.....	17
4. Updating InduSoft Runtime Folder	18

About User Manual

This manual fall into four main groups:

1. Change User Interface Language

Introduce how to change the language of IWSPAC's user interface

2. Download IWS Project to IWSPAC

Introduce how to download your project into IWSPAC

3. Using PAC Utility to Manage IWSPAC

Brief Introduction of using PAC utility to manage your IWSPAC

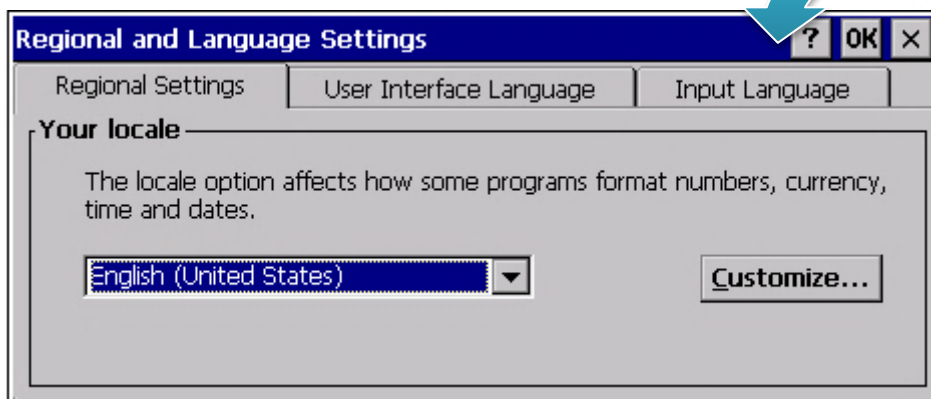
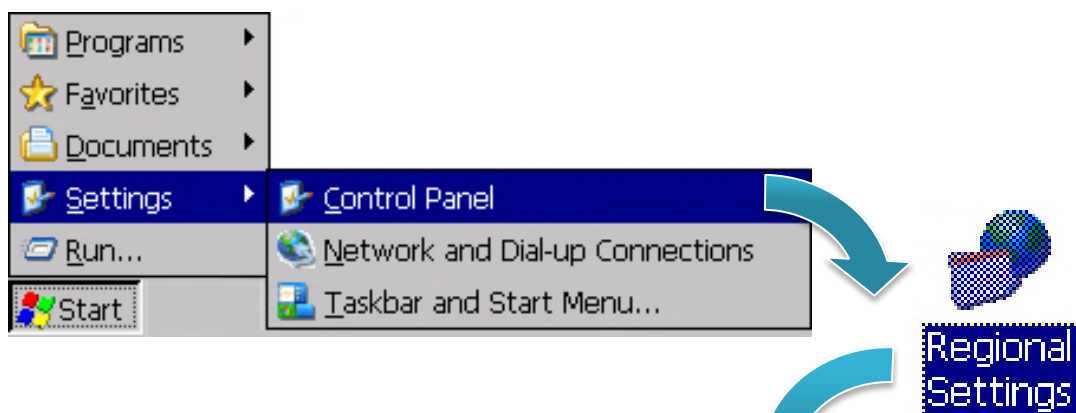
4. Updating InduSoft Runtime Folder

Introduce how to update the latest version of runtime folder

1. Changing User Interface Language

English is IWSPAC's default language, if you want to change it, please follow the following steps.

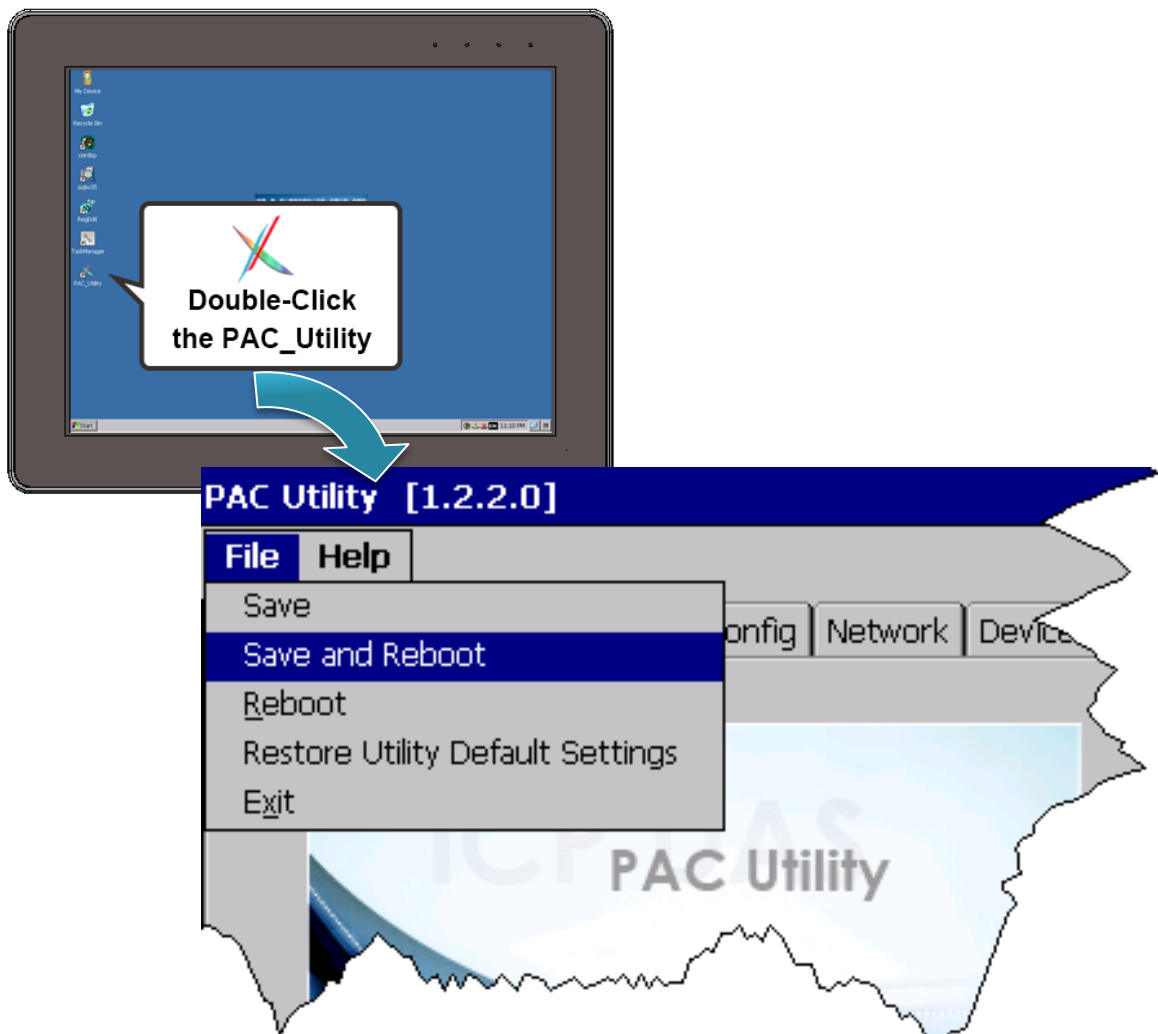
Step 1: Click "Start" menu then select "Settings" → "Control Panel" → Select "Regional Settings"



Step 2: Click “User Interface Language tab”, select any language which you want then click “OK” button



Step 3: Execute PAC Utility, then reboot IWSPAC to apply the new configuration



2. Downloading IWS Project to IWSPAC

This Chapter will show you how to download your InduSoft project into IWSPAC and run it. Please follow the steps below

Step 1 : Please refer to chapter 3.1.2 to set IWSPAC's IP address, and check the connection state between IWSPAC and PC

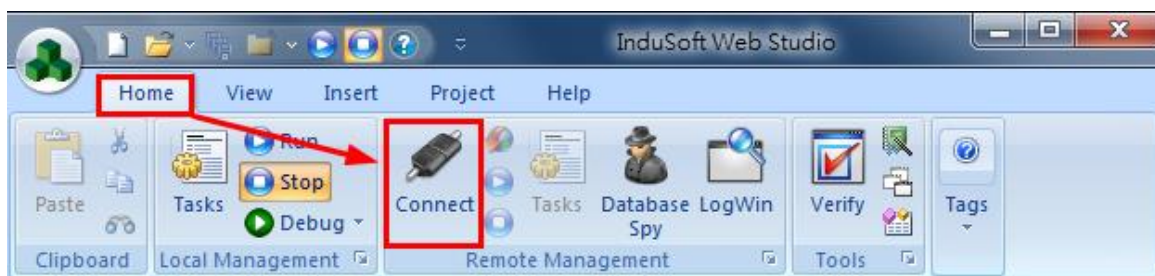
Step 2 : Execute InduSoft agent, CEMServer.exe, which is at \Micro_SD\InduSoft\

Step 3 : After execute InduSoft agent, it will show the IP(s) you are using now, please write it down, we will use it later

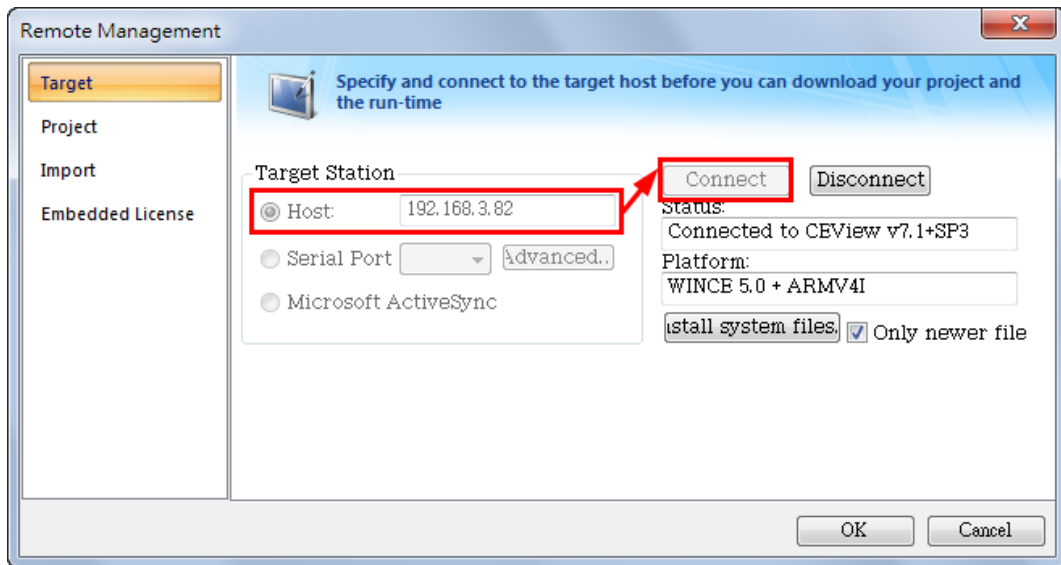


Step 4 : Launch InduSoft Web Studio on PC, and open your project

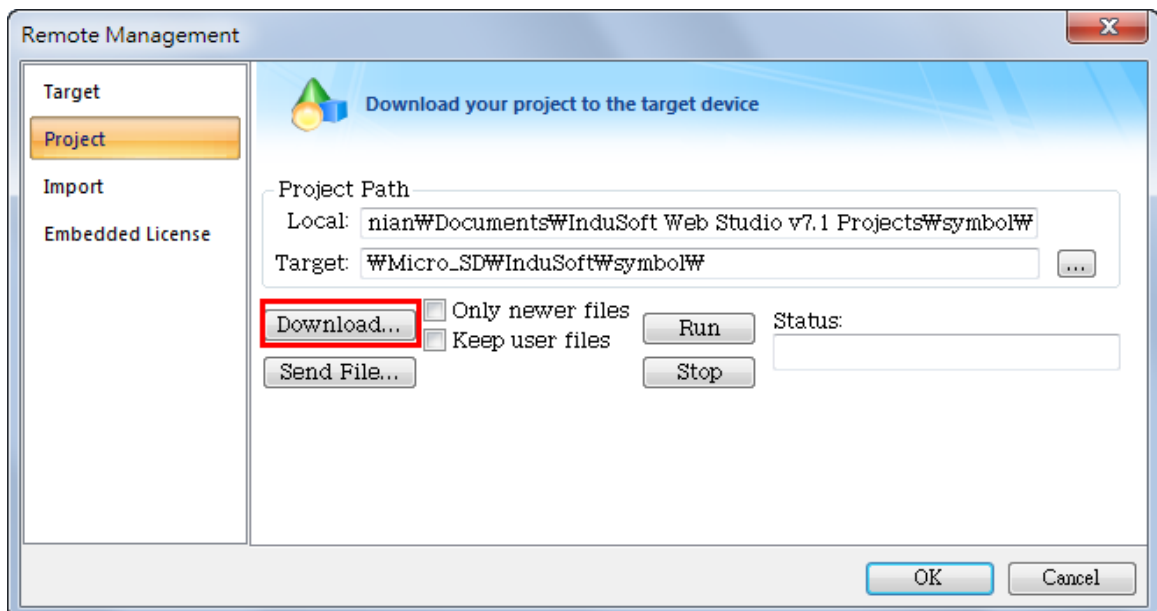
Step 5 : Select **Ribbon** → **Home** → **Remote Management** → **Connect**



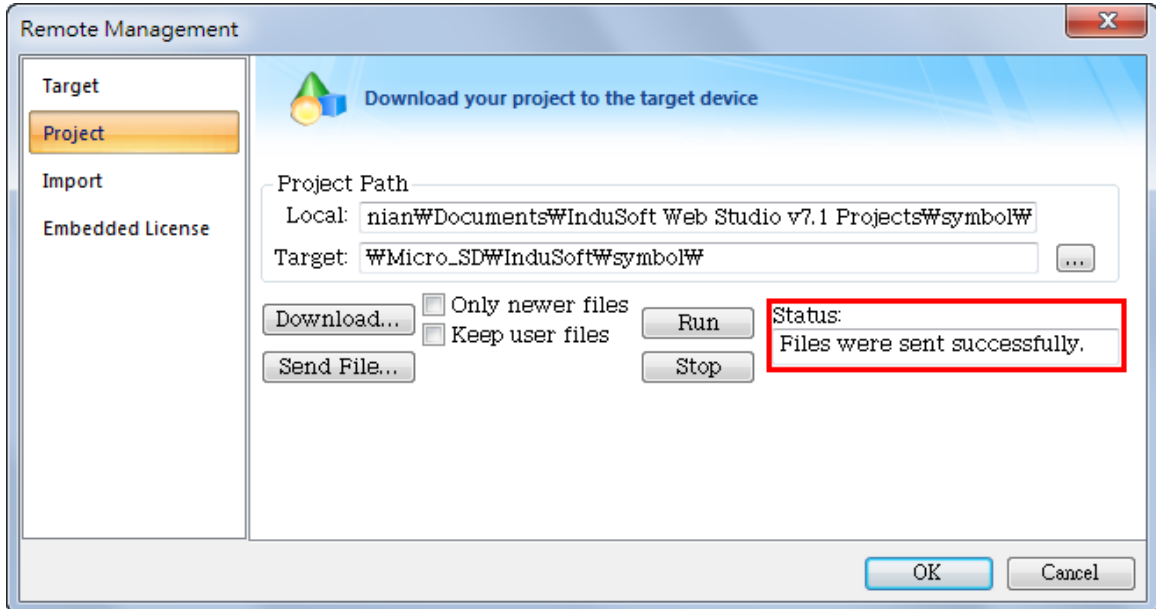
Step 6 : Type IWSPAC's IP address in the "Host" field(here we use 192.168.3.82), then click "Connect" button. After you connect, "Status" and "Platform" fields will show IWSPAC's information.



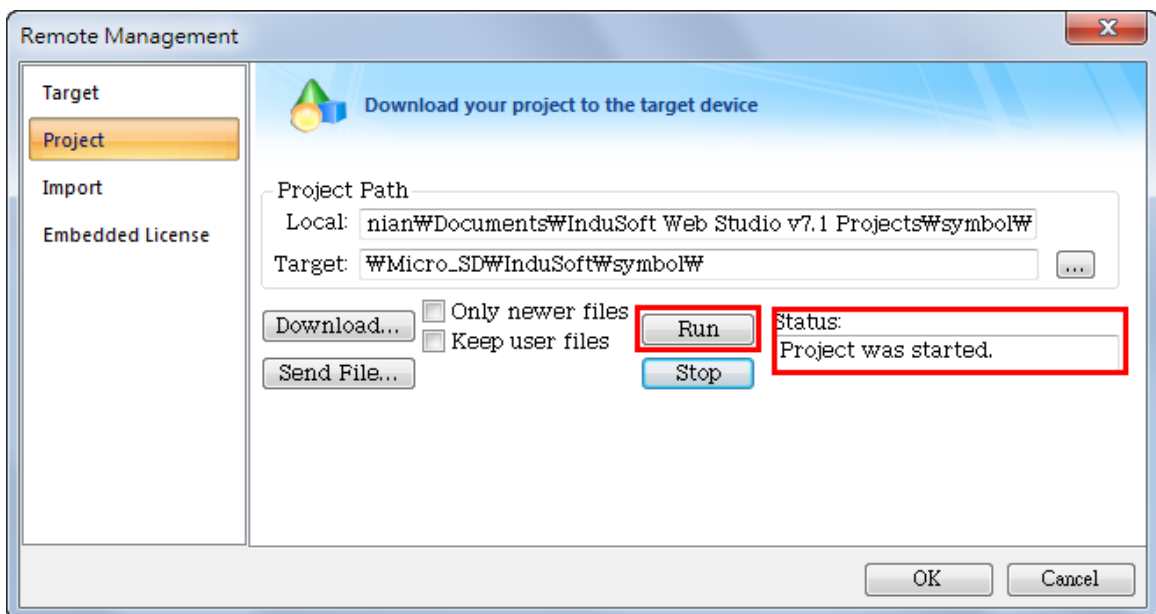
Step 7 : Select "Project" tab. "Local:" field will show the location of your project, and "Target:" field will show you the destination where you will download, you can just use the default setting. Click "Download..." button to download your project.



Step 8 : “Status” field will show message “Files were sent successfully” when it finished



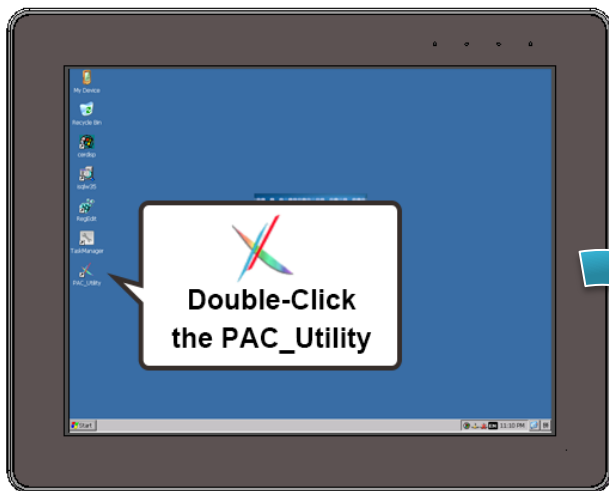
Step 9: Push “Run” button to launch remote application. If success, “Status” will show “Project was started.” message, and you can click ”Stop” button to stop remote application.



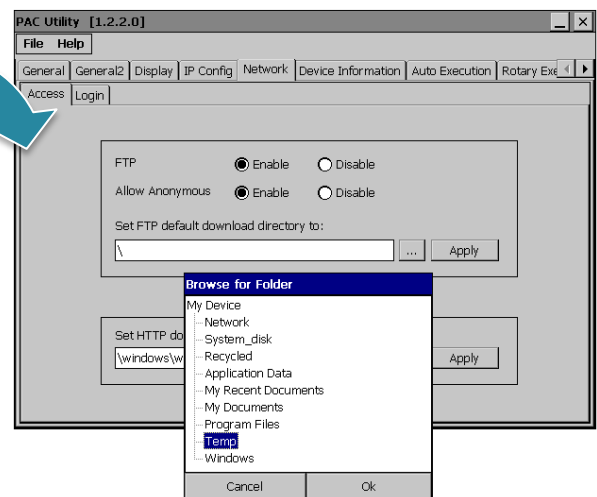
3. Using PAC Utility to Manage IWSPAC

The PAC Utility is a collection of the IWSPAC system tool that allows user quickly and easily configure and manage IWSPAC.

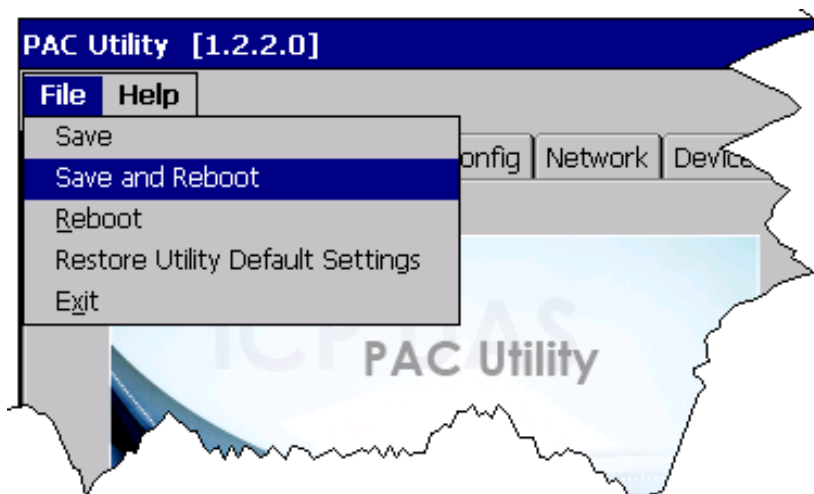
Step 1: Double-click the PAC Utility on the desktop



Step 2: Configure IP address(DHCP), FTP Server, Auto Execution files..., etc

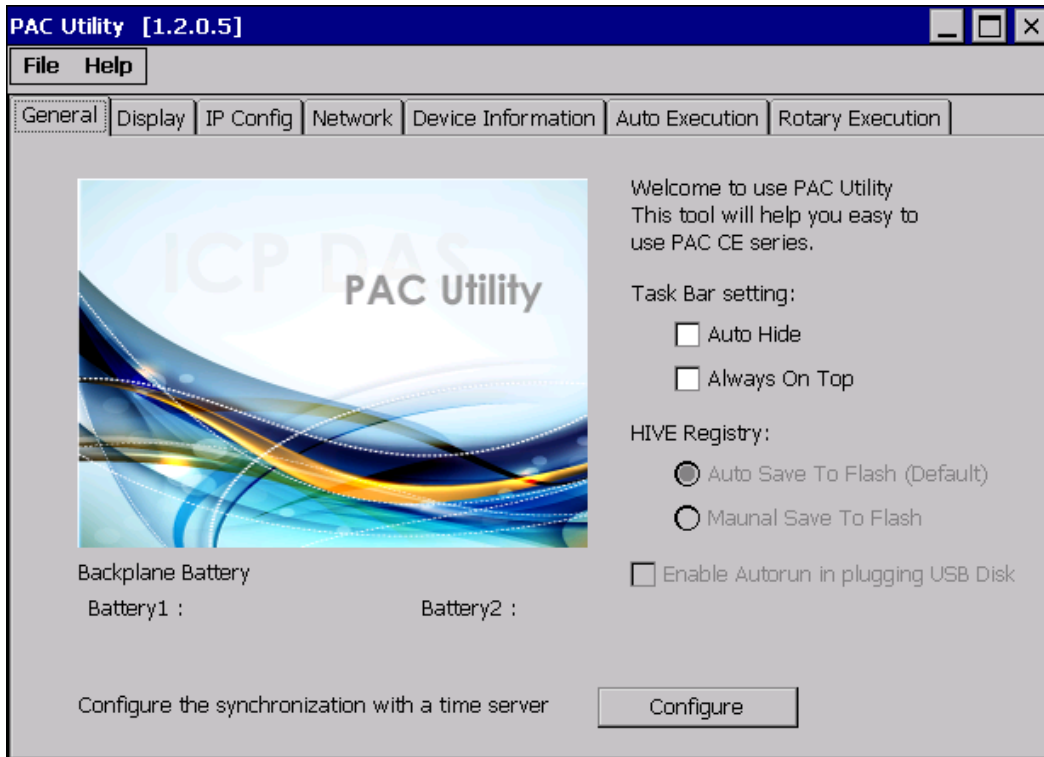


Step 3: Reboot the IWSPAC



3.1. Functions of PAC Utility

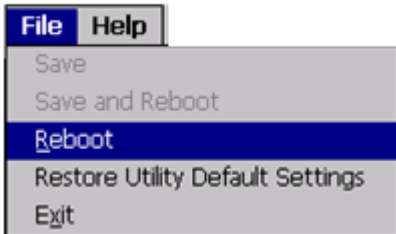
PAC Utility is a collection of software applications that enable management and configuration of ViewPAC system and features.



The PAC Utility includes the following menu bars and property tabs. All of these functions will be explained later.

Menu bar	Property Tab
<ul style="list-style-type: none"> ➤ File ➤ Help 	<ul style="list-style-type: none"> ➤ General ➤ Display ➤ IP Config ➤ Network ➤ Device Information ➤ Auto Execution ➤ Rotary Execution

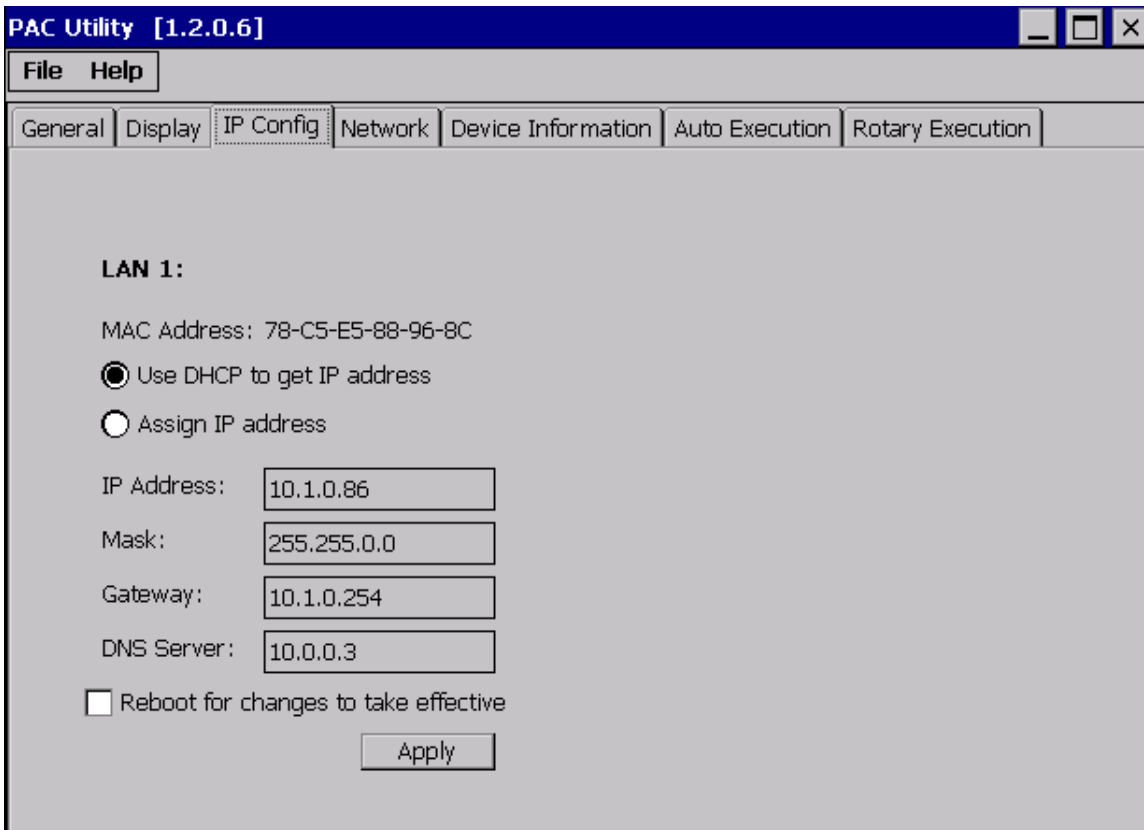
3.1.1. Menu Bar – File



The menus use to	How to use
Reboot	Restarts the IWSPAC
Restore Default Settings	Restore the settings of IWSPAC to its default.
Exit	Exits the PAC Utility.

3.1.2. Property Tab – IP Config

The IP Config tab provides functions to configure either DHCP (Roaming) or manually configured (Static) network settings and to monitor the MAC address. Generally, DHCP is the default settings, but if you don't have a DHCP server, you must configure the network settings by using manual configuration.



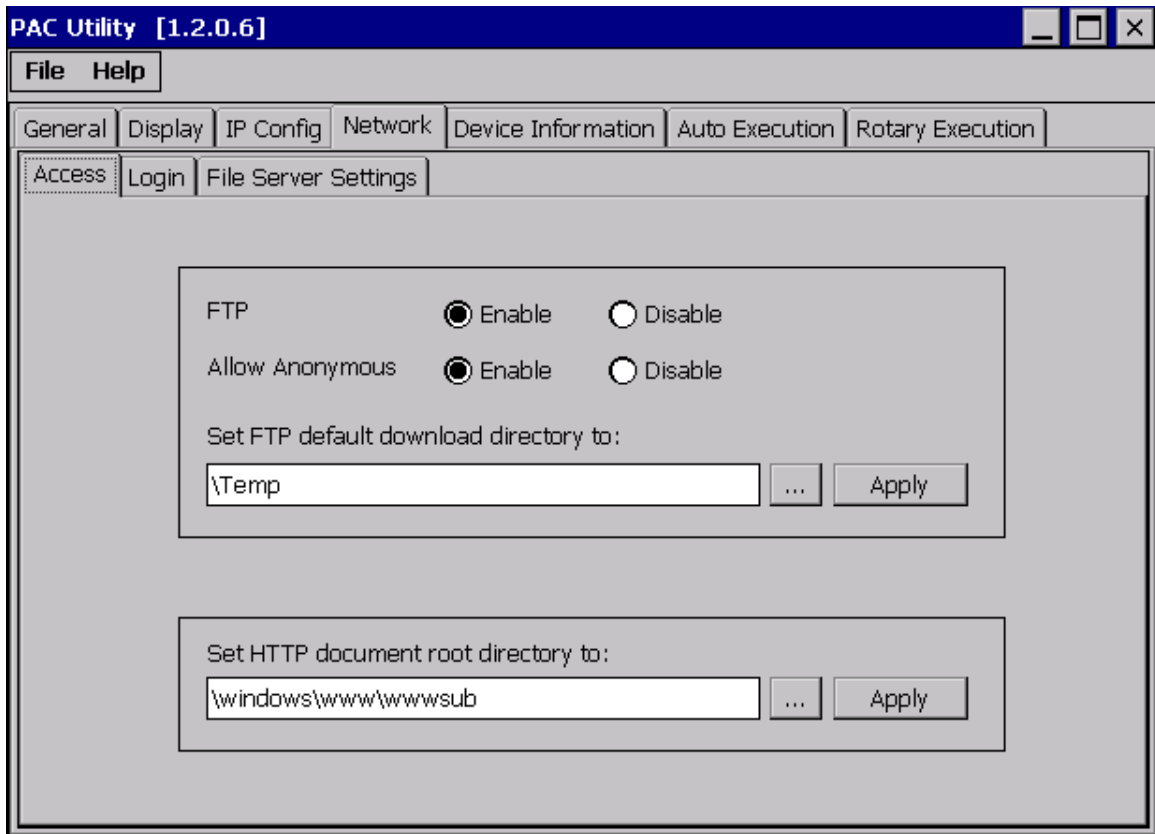
The menus use to	How to use
Set the network settings	<p>Use DHCP to get IP address: Select the Use DHCP to get IP address option, and then click the Apply button.</p> <p>Assign an IP address: Select the Assign IP address option, and then click the Apply button.</p>

3.1.3. Property Tab – Network

The Network tab include a common-use tab – Access tab.

Access Tab

The Access tab provides functions to enable/disable the FTP access, enable/disable anonymous FTP access, and configure the FTP and HTTP directory path.

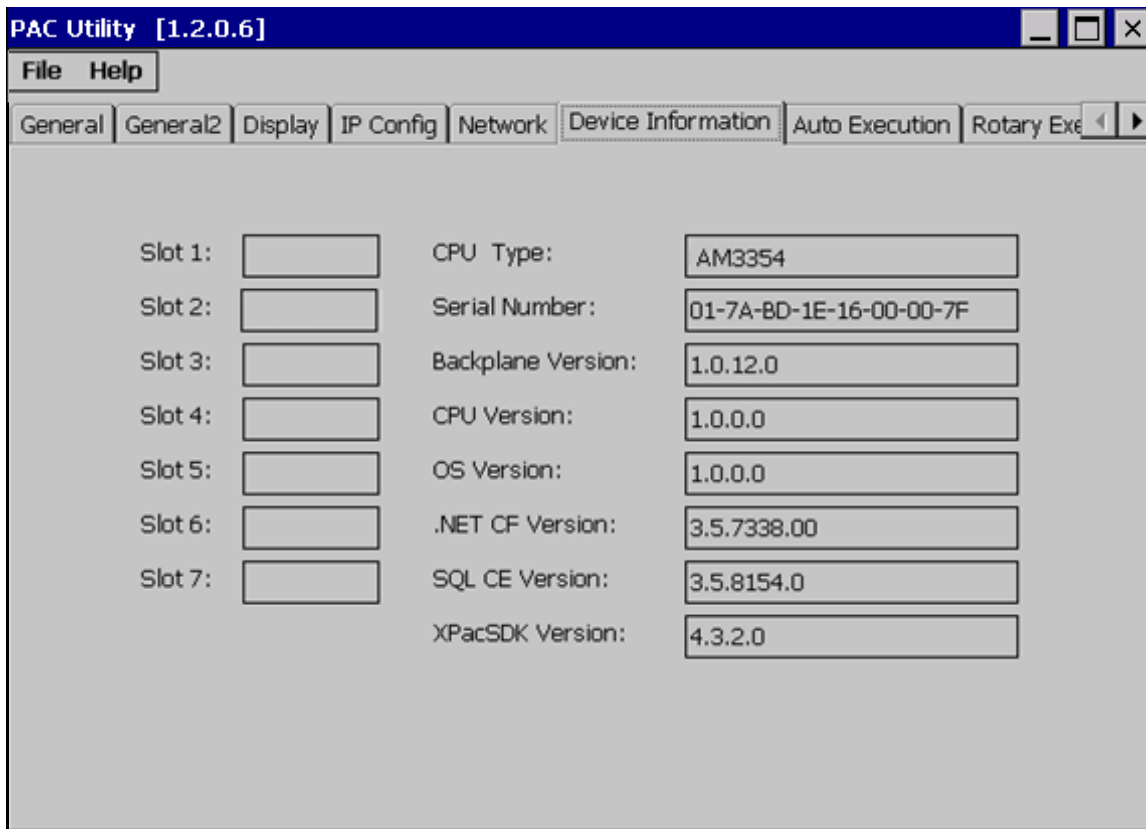


The menus use to	How to use
Enable or disable the FTP access	<p>Enable: Select the Enable check box in the FTP field, and then click the Apply button.</p> <p>Disable: Select the Disable check box in the FTP field, and then click the Apply button.</p>

The menus use to	How to use
Enable or disable anonymous FTP access	<p>Enable: Select the Enable check box in the Allow Anonymous field, and then click the Apply button.</p> <p>Disable: Select the Disable check box in the Allow Anonymous field, and then click the Apply button.</p>
Set the FTP directory path	Enter a new path in the Set FTP default download directory to: field, and then click the Apply button.
Set the HTTP directory path	Enter a new path in the Set HTTP document root directory to: field, and then click the Apply button.

3.1.4. Property Tab – Device Information

The Device Information tab provides functions to monitor necessary system information of the IWSPAC. The information is the most important note of version control for upgrading system.



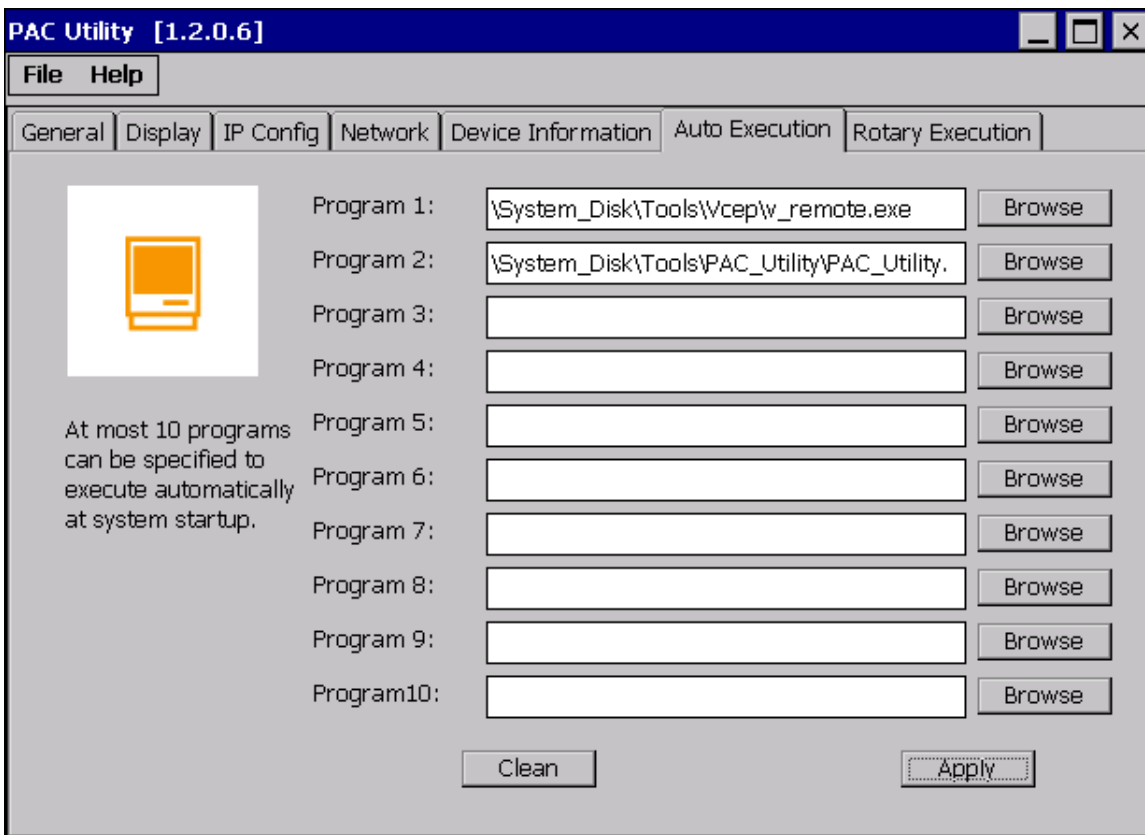
3.1.5. Property Tab – Auto Execution

The Auto Execution tab provides functions to configure programs running at IWSPAC startup, it allows users to configure ten execute files at most.

Tips & Warnings



The specific extensions are .exe and .bat, and they are executed in order of program 1, program 2, etc.



The menus use to	How to use
Configure programs running at startup	Click the Browse button to select the execute file which you want, and then click the Apply button.

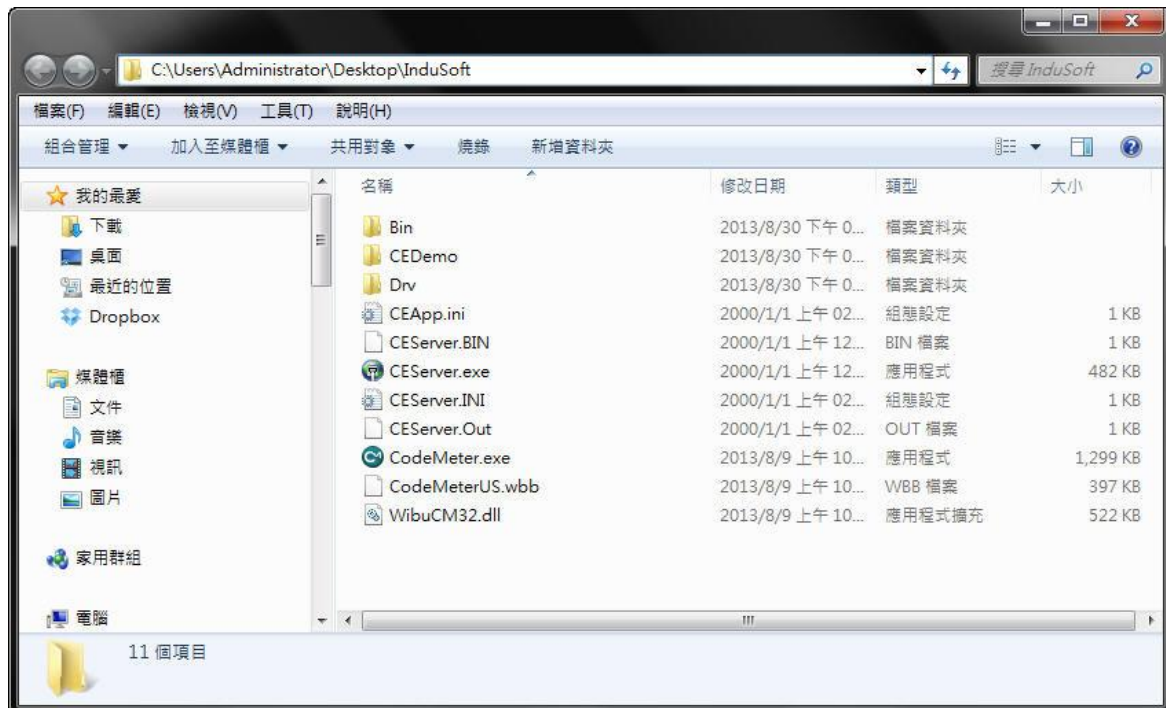
4. Updating InduSoft Runtime Folder

InduSoft Runtime folder is pre-installed in \Micro_SD\InduSoft, if you want to update the latest runtime folder, please follow the steps below.

Step 1 : Download the latest runtime folder from ICPDAS's InduSoft website :

<http://www.icpdas.com/products/Software/InduSoft/indusoft.htm>

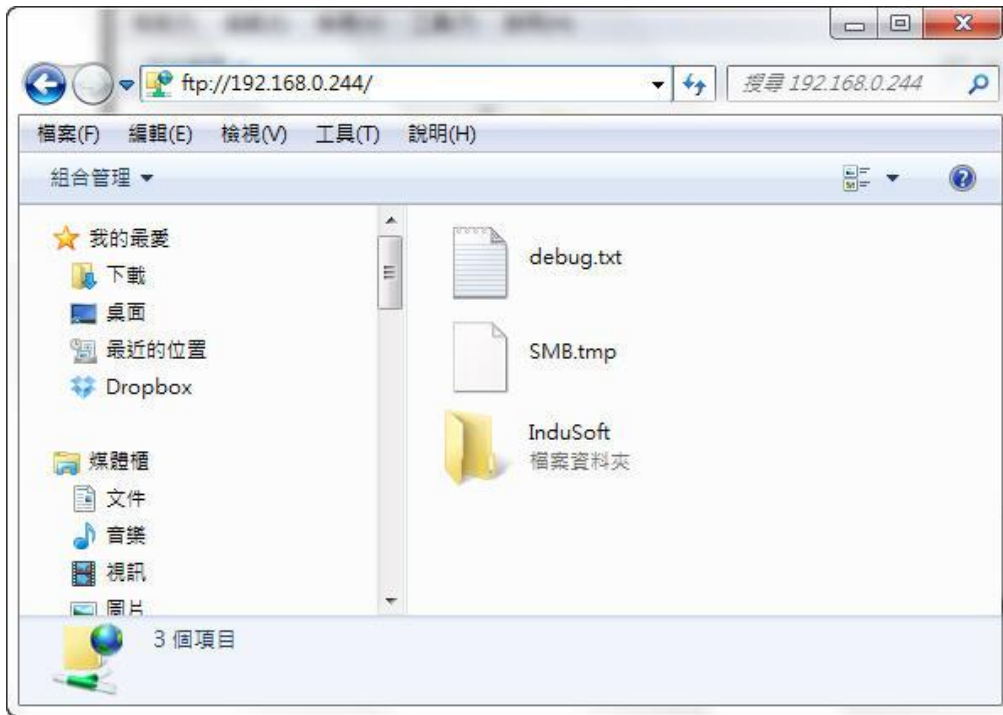
Step 2 : Unzip the compressed file



Step 3 : Make sure both InduSoft project and CEsServer process are closed on IWSPAC

Step 4 : Make sure the connection between IWSAPC and PC is normal. If you'd like to transfer files by FTP client software, please refer to Step 5. If you'd like to transfer files by USB flash drive, skip to Step 6.

Step 5 : Launch "My Computer", and type the IWSPAC's IP address in the address bar, here we use <ftp://192.168.0.244/>, then copy Indusoft runtime folder into this window as below.



The default FTP path of IWSPAC is **My Device\ Temp**, then back to IWSPAC, cut the folder into **Micro_SD**.

Step 6 : Or you can transfer the InduSoft runtime folder into **Micro_SD** by USB flash drive.

Tips & Warnings



We suggest that both runtime folder and InduSoft IDE have the same version.

Softkey/ Hardkey License version	For InduSoft Runtime folder version
InduSoft v6.1	InduSoft v6.1.x.x
InduSoft v7.0	InduSoft v7.0.x.x
InduSoft v7.1	InduSoft v7.1.x.x