



WP-9000-CE7 Quick Start

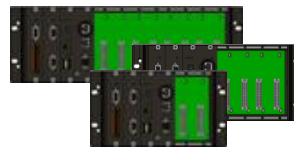
Version 1.1, October 2016

Supported Modules

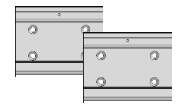
- WP-9221-CE7
- WP-9421-CE7
- WP-9821-CE7

What's in the Box?

In addition to this guide, the package includes these items:



WP-9000-CE7



44 mm DIN-Rail
Clip * 2



RJ-45 Waterproof
Assembly



A microSD card
and a micro
SD/SD adapter



Software
Utility CD



M3x6L
Screw * 8



Screw Driver
2.4 mm

Technical Support

- **WP-9000-CE7 User Manual**

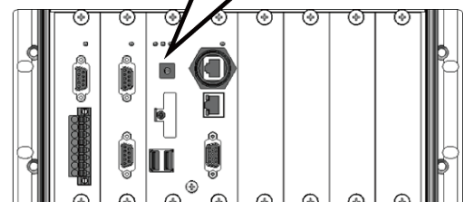
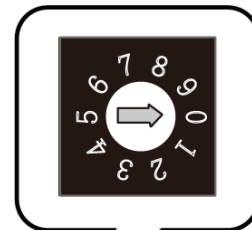
CD:\WinPAC_AM335x\Wp-9000\Document\

http://ftp.icpdas.com/pub/cd/winpac_am335x/wp-9000/document/

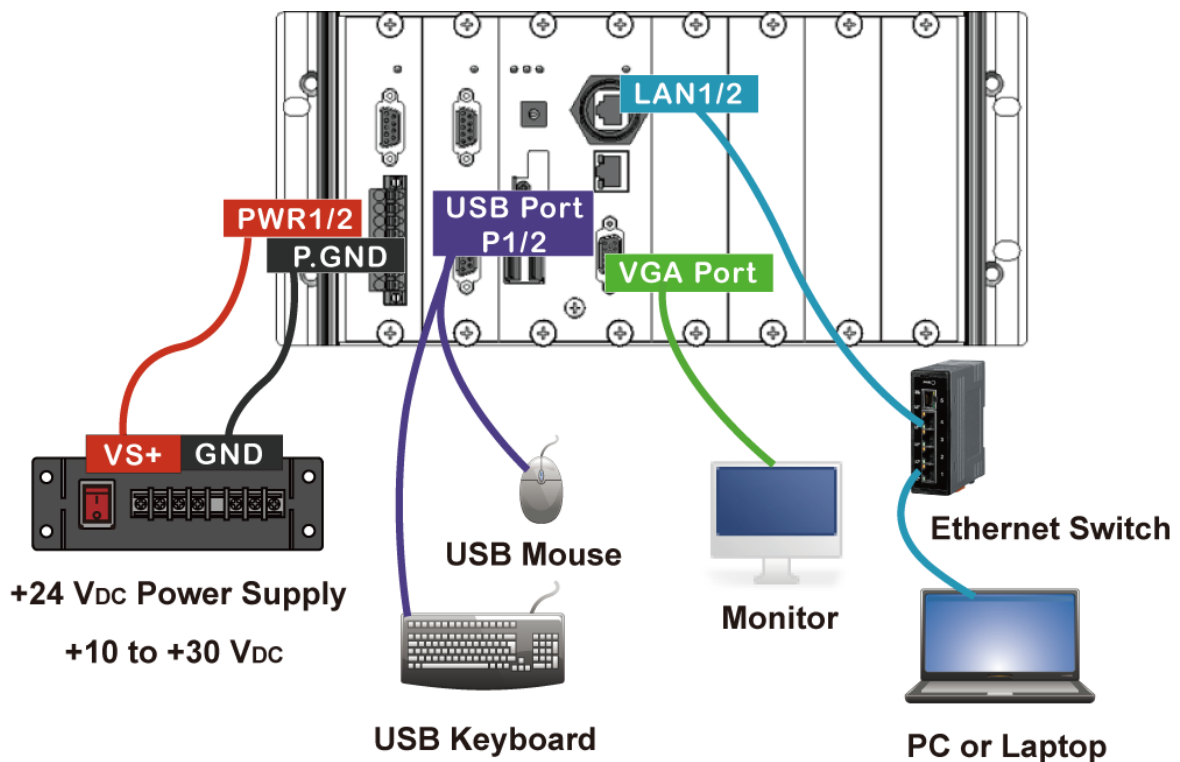
1

Configuring the Boot Mode

Before starting any installation, be sure that the switch is placed in the '0' position.

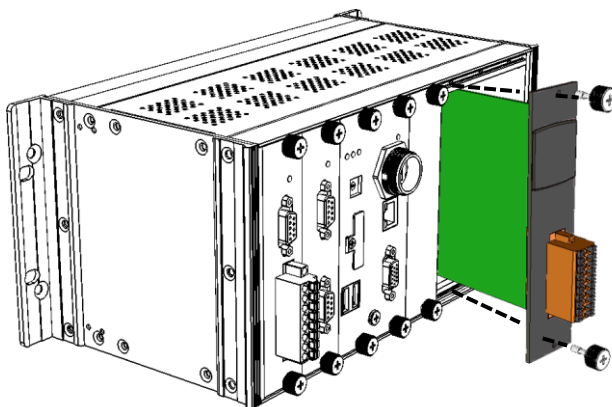


2 Connecting to PC, Monitor and Power Supply



3 Inserting the I/O Module and Wiring Connection

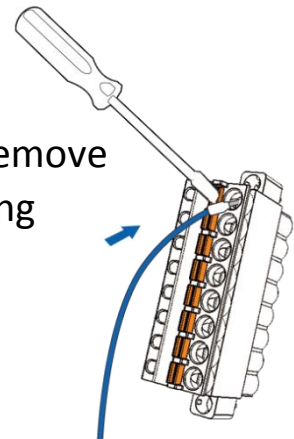
WP-9000-CE7 has 2/4/8 I/O expansion slots and only supports I-9K and I-97K series I/O modules.



Connect/Remove the wiring

i. Push the orange clip in, and keep on push

ii. Insert/remove the wiring



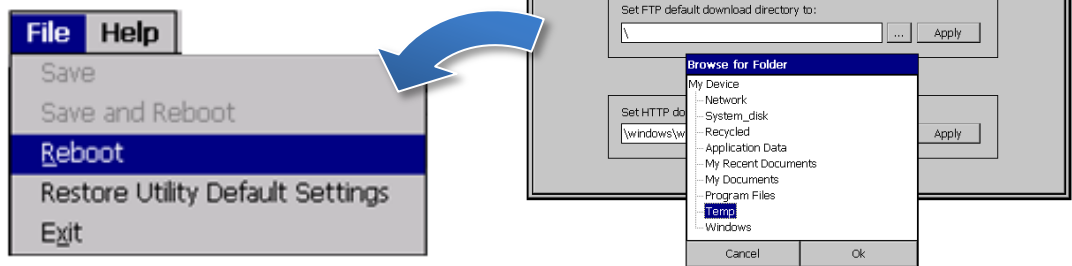
4

Using PAC Utility to Manage the WP-9000-CE7

Step 1: Double-click the PAC Utility on the desktop

Step 2: Configure IP address (DHCP), FTP Server, Auto Execution files..., etc

Step 3: Reboot the WP-9000-CE7 for changes to take effect



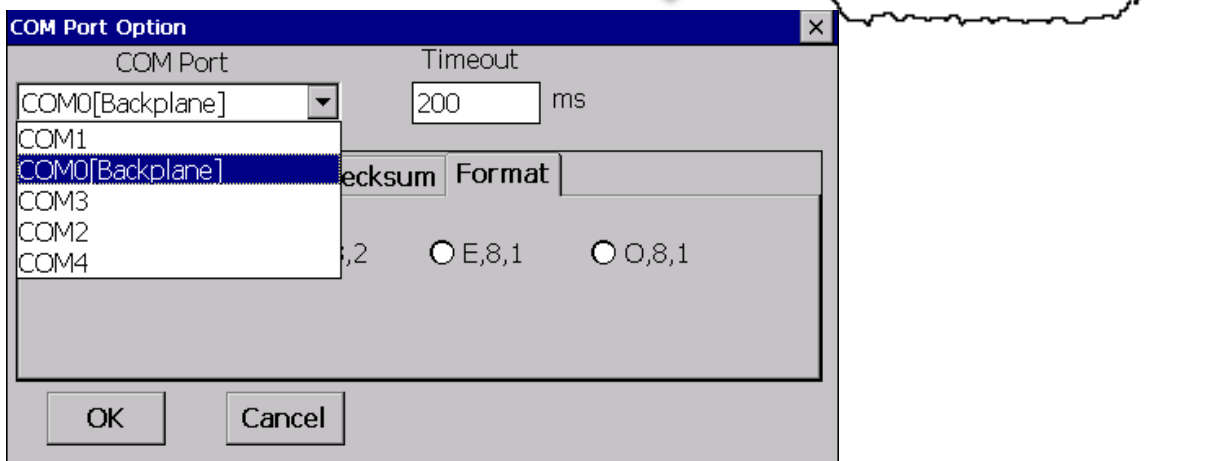
5

Using DCON Utility Pro to Configure I/O Modules

Step 1: Double-click the DCON Utility Pro on the desktop

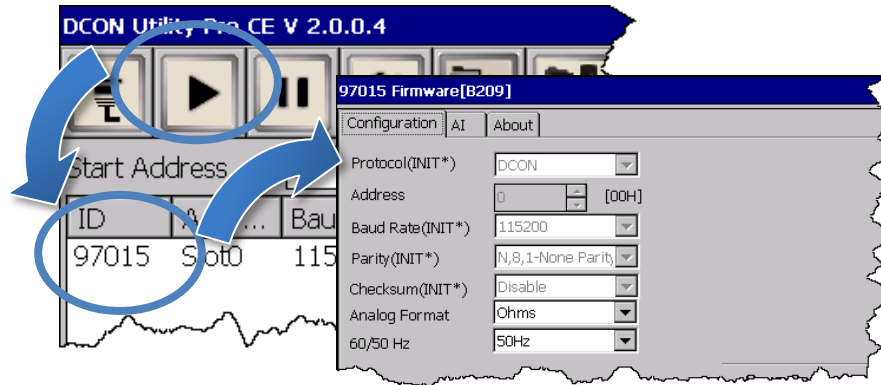
Step 2: Click the  button

Step 3: Configure the communication settings



Step 4: Click the  button

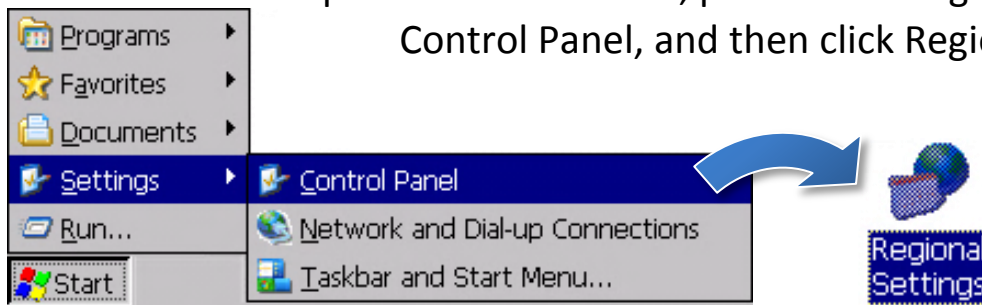
Step 5: Click the module name to configure the I/O module



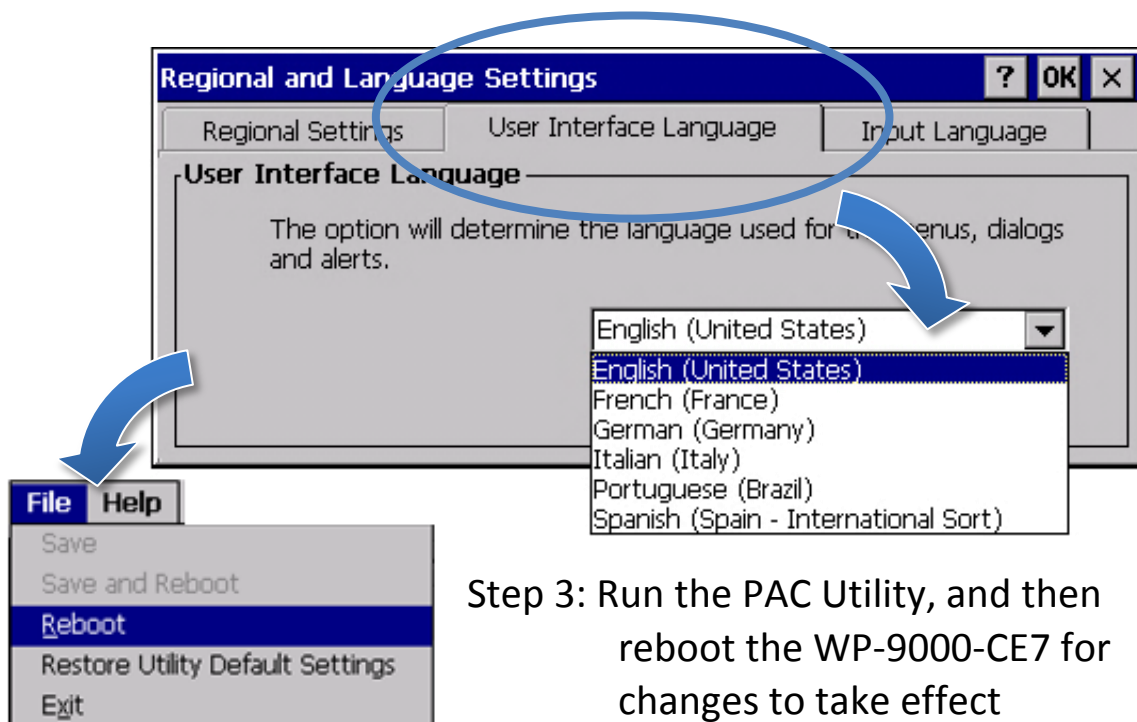
6

Changing the User Interface Language

Step 1: Click Start menu, point to Settings, click Control Panel, and then click Regional Settings



Step 2: Click User Interface Language tab, choose to your local language, and then click OK



Step 3: Run the PAC Utility, and then reboot the WP-9000-CE7 for changes to take effect