

# 1 What's in the shipping package?

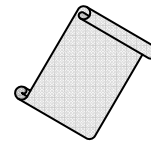
The package includes the following items:



**iDS Series**



**Software CD**



**Quick Start**  
(This Document)



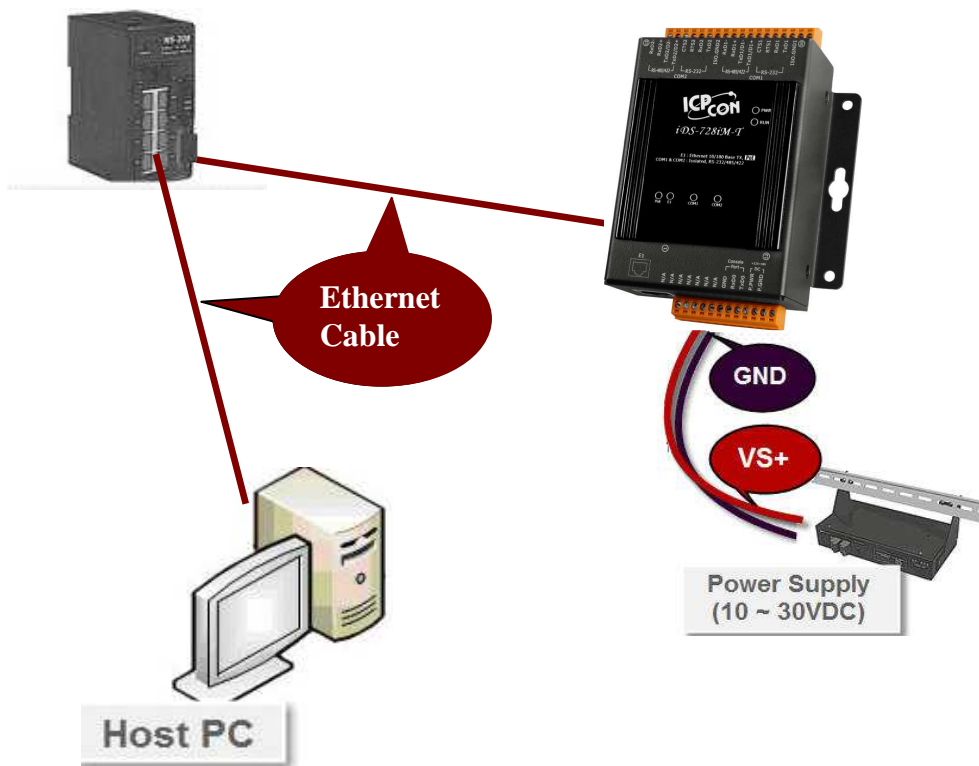
**CA-0910 Cable**

# 2 Preparations for devices

1. Power Supply: **+10 ~ +30 V<sub>DC</sub>**. (Ex: DP-665)
2. Ethernet Hub. (Ex: NS-205)
3. Make sure your PC has workable network settings.
4. Disable or well configure your Windows firewall and Anti-Virus firewall first, else the "Search Servers" on page 3 may not work. (Please contact with your system Administrator)

# 3 Connecting the Power and Host PC

1. Connect both the iDS device and your computer to the same sub network or the same Ethernet Switch, and power the iDS device on.



# 4 Installing software on your PC

**Install VxComm Utility(v 2.12.07 or later version):**

The software is located at:  
CD: \NAPDOS\Driver\VxComm\_Driver



[http://ftp.icpdas.com/pub/cd/8000cd/napdos/driver/vxcomm\\_driver/](http://ftp.icpdas.com/pub/cd/8000cd/napdos/driver/vxcomm_driver/)

# 5 Configuring Ethernet Settings

1. Double click the Web Browser and input the iDS-700's IP address(default IP "**192.168.255.1**").
2. Please refer to below steps into the web management page.

The screenshot shows the web management interface for the iDS-700 Series. The browser address bar displays **192.168.255.1** with a red circle and arrow pointing to it, and a red note: "To type default IP". The page title is "iDS-700 Series" and "LogOut". The "Login" section contains a "UserName" field with "admin" and a "Password" field with ".....", both with red circles and arrows pointing to them, and a red note: "To input default username(admin) and password(admin)". A "Login" button is highlighted with a red circle and arrow, with a red note: "To click 'Login' button". A large red arrow points from the login page to the main configuration page below.

The main configuration page shows the "iDS-700 series" title and "Firmware Version: VCOM Device Server v0.2j (build at May 19 2014) with lib v5". The left sidebar lists the following settings:

- DEVICE INFORMATION
  - Basic Setting
  - Firmware upgrade
- NETWORK SETTING
  - Network
  - SNMP
- SERIAL PORT SETTING
  - Port1
    - Advanced Options
  - Port2

3. Click the **“Network”** link to configure network. After user configure the network settings, user must click **“save”** button to save the configuration.

iDS-700 Series    LogOut

DEVICE INFORMATION  
Basic Setting  
Firmware upgrade

NETWORK SETTING  
**Network**  
SNMP

SERIAL PORT SETTING  
Port1  
- Advanced Options  
Port2  
- Advanced Options

DEVICE SERVER

### Network Setting

MAC Address: 78:C5:E5:95:C6:A8

IP1 Configuration: DHCP

IP address: 10.1.0.84

netmask: 255.255.0.0

gateway: 10.1.0.254

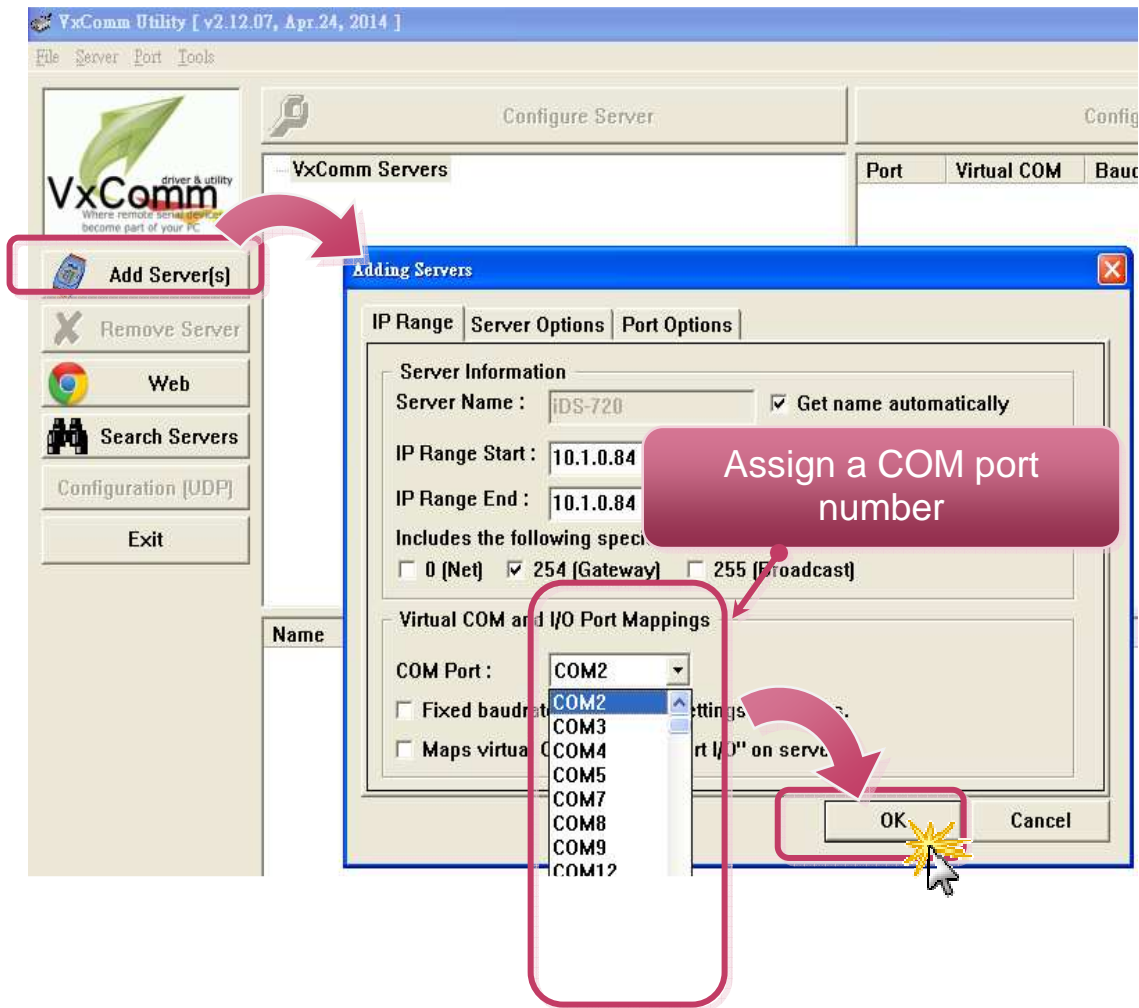
DNS1: 10.0.0.3

DNS2: 10.0.0.9

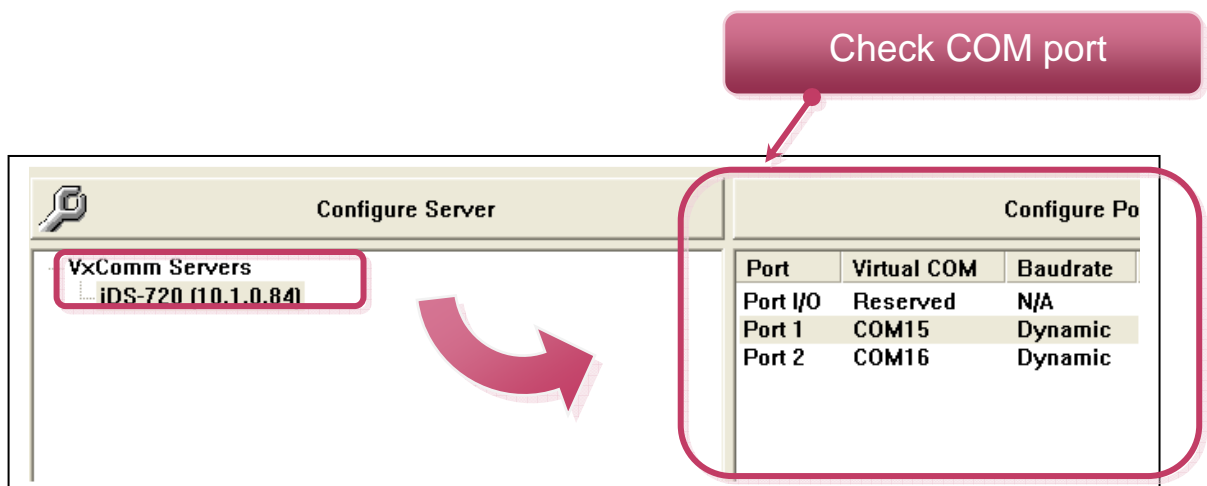
**save**

## 6 Configuring Virtual COM Ports

1. Double click the VxComm Utility shortcut on the desktop.
2. Click the **“Add Server[s]”** button. Assign a COM Port number and click **“OK”** to save your settings.



3. Click on iDS device name and check the virtual COM port mappings on the PC.

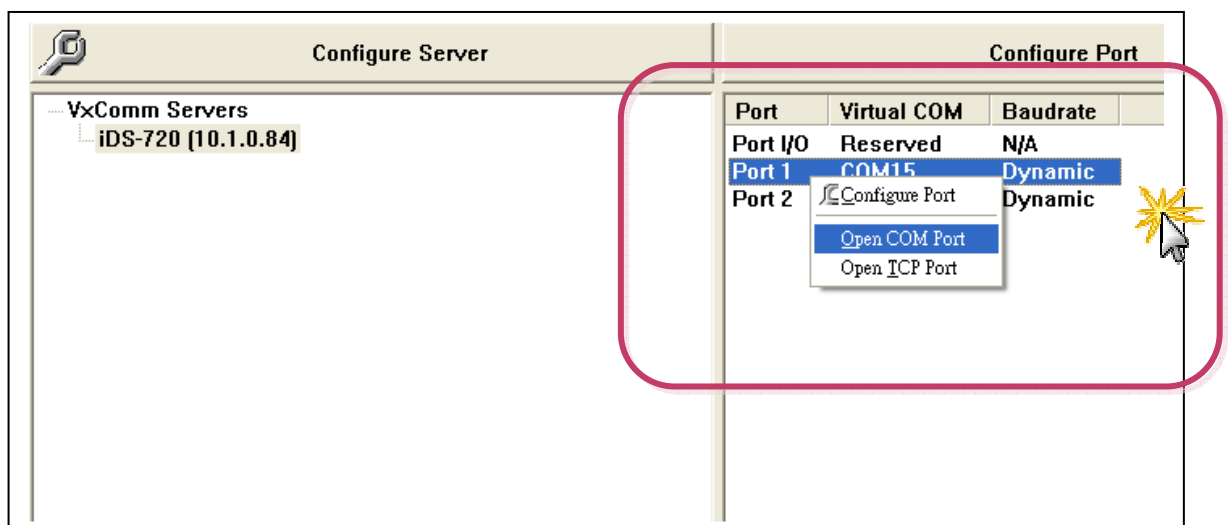


4. Click "**Tools**" >> "**Restart Driver**", and then click the "**Restart Driver**" button.

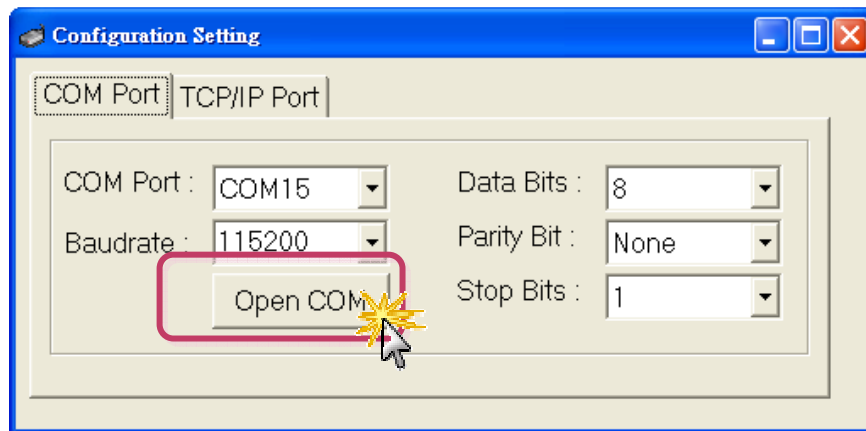


## 7 Testing iDS Device

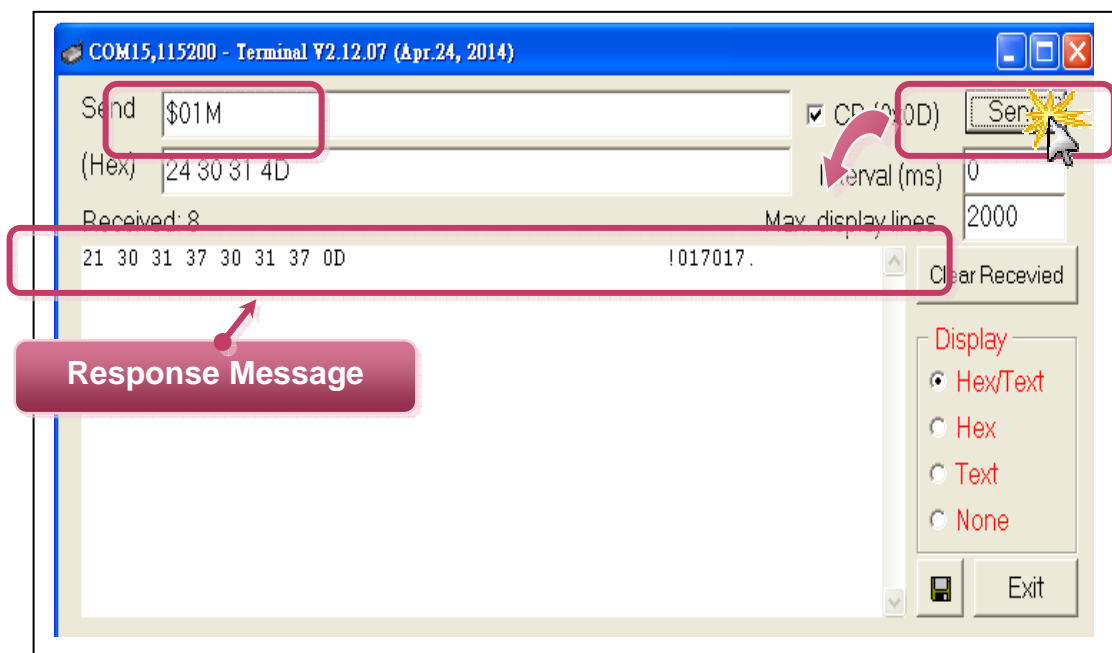
1. Right click Port 1 and then choose the "**Open COM Port**" item.



2. Check that the configuration of the COM Port is correct and then click the **"Open COM"** button.



3. Type a string in the send field then click the **"Send"** button. If a response is received, it will be displayed in the received field. (ex sending a "DCON Command" to ICP DAS i7k modules).



4. If the test is successful, then your COM port program should now be able to work with this Virtual COM Port.

# 8

## Recovery iDS Factory Setting

1. Click the "Reset" Button(3~5 seconds) to recovery the iDS modules's factory setting.

IP : 192.168.255.1  
NetMask : 255.255.255.0  
Gateway : 192.168.255.254  
Protocol : icpdas protocol



## Related Information

- **iDS Series Product Page:**  
[http://www.icpdas.com/root/product/solutions/industrial\\_communication/pds/ids-700.html](http://www.icpdas.com/root/product/solutions/industrial_communication/pds/ids-700.html)
- **iDS Documentations:**  
CD:\Napdos\iDS\iDS-700\document\  
<http://ftp.icpdas.com.tw/pub/cd/linpac/napdos/ids-700/document/datasheet/ids-700.pdf>
- **iDS Software:**  
<http://ftp.icpdas.com.tw/pub/cd/linpac/napdos/ids-700/software>
- **NS-205 and DP-665 Product Page (optional):**  
<http://www.icpdas.com/products/Switch/industrial/ns-205.htm>  
[http://www.icpdas.com/products/Accessories/power\\_supply/dp-665.htm](http://www.icpdas.com/products/Accessories/power_supply/dp-665.htm)

