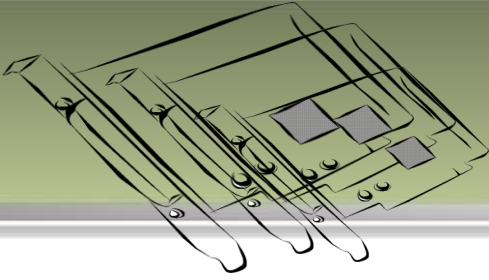


I/O CARD QUICK START GUIDE

For PISO-813/PISO-813U

English/ Feb. 2014/ Version 1.2



1 What's in the shipping package?

The package includes the following items:



One PISO-813/PISO-813U PCI Board.



One Software Utility CD (V5.2 or later)



One Quick Start Guide (This Document)



One CA-4002 D-Sub connector

2

Installing Windows Driver

Step 1: Setup the Windows driver. The driver is located at:

- The UniDAQ driver supports 32-/64-bit Windows 2K/XP/2003/Vista/7/8; it is recommended to install this driver for new user:
CD: \NAPDOS\PCI\UniDAQ\DLL\Driver
<http://ftp.icpdas.com/pub/cd/iocard/pci/napdos/pci/unidaq/dll/driver/>
- The PISO-813 Series classic driver supports Windows 98/NT/2K and 32-bit XP/ 2003/ Vista/7/8. Recommended to install this driver for have been used PISO-813 series boards of regular user, please refer to :
<http://ftp.icpdas.com/pub/cd/iocard/pci/napdos/pci/piso-813/manual/quickstart/classic/>

Step 2: Click the "Next>" button to start the installation.

Step 3: Check your DAQ Card is or not on supported list, then click the "Next>" button.

Step 4: Select the installed folder, the default path is C:\ICPDAS\UniDAQ , confirm and click the "Next>" button.

Step 5: Check your DAQ Card on list, then click the "Next>" button.

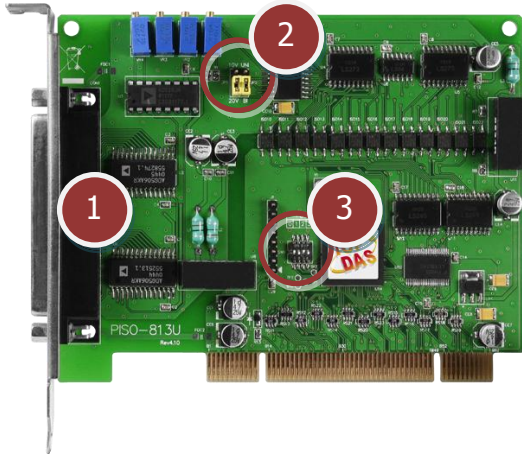
Step 6: Click the "Next>" button on the **Select Additional Tasks window.**

Step 7: Click the "Next>" button on the **Download Information window.**

Step 8: Select "No, I will restart my computer later" and then click the "Finish" button.

For detailed information about the driver installation, please refer to Chapter 2.1 "Getting the UniDAQ Driver DLL Installer package" of the UniDAQ SDK user manual.

3 Jumper Setting



- 1. **CON1:** 32 channels analog input.
- 2. **JP1:** Input range setting.
JP2: Unipolar/Bipolar setting.
- 3. **SW1:** Card ID function for PISO-813U only.

Please make sure JP1 and JP2 jumper is kept in default setting before self-test, as follows:

Jumper		JP1: Analog Input Range Selection	
		<input checked="" type="checkbox"/> Input Range= 20 V (Default)	Input Range = 10 V
Jumper		JP2: Bipolar/Unipolar Selection	
		<input checked="" type="checkbox"/> Bipolar Mode (Default)	Unipolar Mode

Setting Reference: (*) Default Setting

Analog Input Range	JP2 (Polarity Select)	JP1 (Range Select)
-10 V ~ +10 V (*)	Bipolar	20 V
-5 V ~ +5 V	Bipolar	20 V, 10 V
-2.5V ~ +2.5 V	Bipolar	20 V, 10 V
-1.25 V ~ +1.25 V	Bipolar	20 V, 10 V
-0.625 V ~ +0.625 V	Bipolar	20 V, 10 V
0 ~ 10 V	Unipolar	10 V
0 ~ 5 V	Unipolar	10 V
0 ~ 2.5 V	Unipolar	10 V
0 ~ 1.25 V	Unipolar	10 V
0 ~ 0.625 V	Unipolar	10 V

For more detailed jumper and SW1 information, please refer to manual Sec. 2.2 A/D Converter Operation and Sec. 2.3 Card ID Switch.

(CD:|NAPDOS|PCI|PISO-813|manual|)

4 Installing Hardware on PC

Step 1: Shut down and power off your computer.

Step 2: Remove the cover from the computer.

Step 3: Select an unused PCI slot.

Step 4: Carefully insert your I/O card into the PCI slot.

Step 5: Replace the PC cover.

Step 6: Power on the computer.

After powering-on the computer, please finish the Plug&Play steps according to the prompted messages.

5 Pin Assignments

- CON1 Pin Assignments (Female DB37).

Pin Assignment	Terminal No.	Pin Assignment
AI_0	01	20 AI_1
AI_2	02	21 AI_3
AI_4	03	22 AI_5
AI_6	04	23 AI_7
AI_8	05	24 AI_9
AI_10	06	25 AI_11
AI_12	07	26 AI_13
AI_14	08	27 AI_15
A.GND	09	28 A.GND
A.GND	10	29 A.GND
AI_16	11	30 AI_17
AI_18	12	31 AI_19
AI_20	13	32 AI_21
AI_22	14	33 AI_23
AI_24	15	34 AI_25
AI_26	16	35 AI_27
AI_28	17	36 AI_29
AI_30	18	37 AI_31
A.GND	19	

CON1

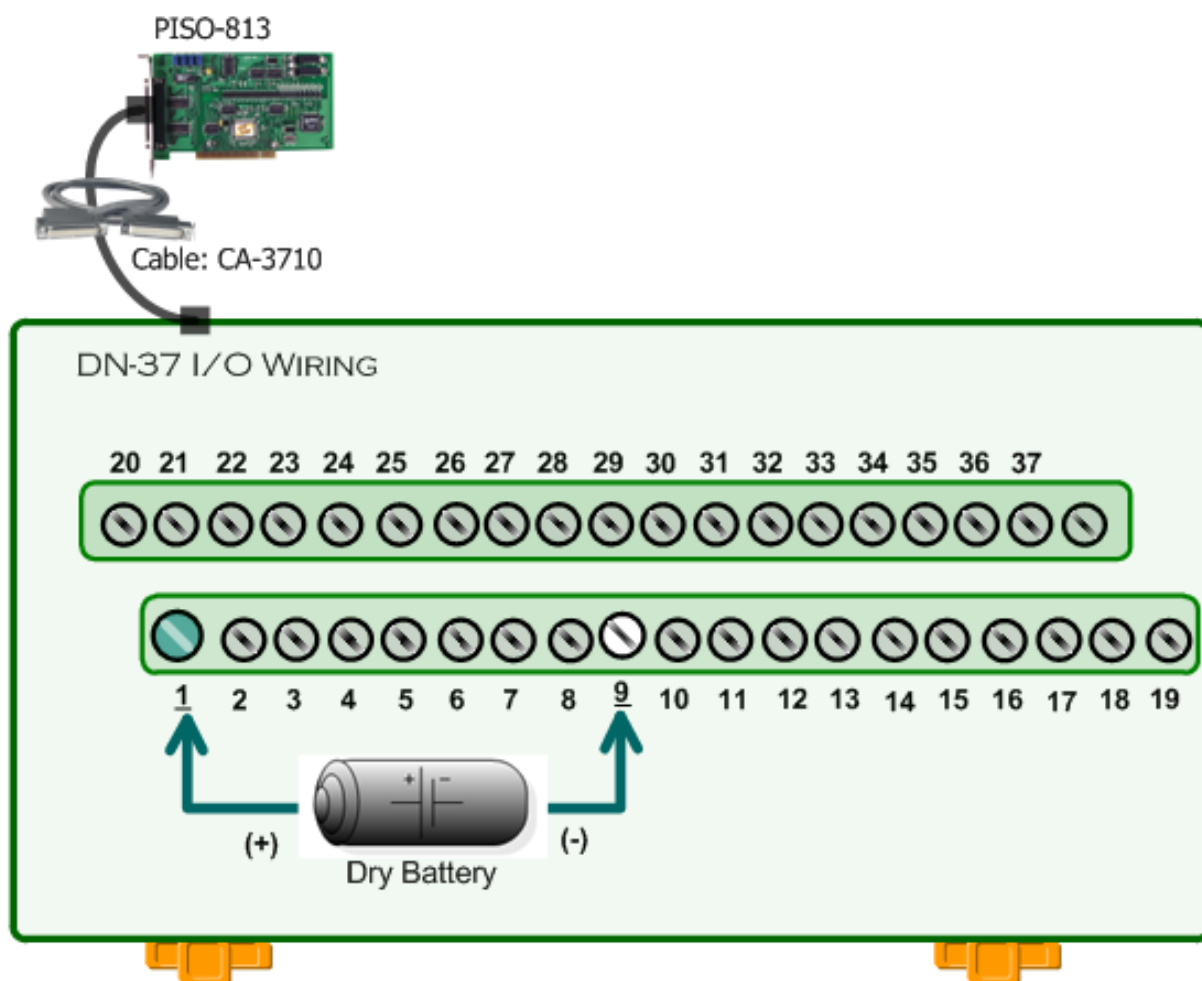
6 Self-Test

■ Prepare for device:

- ☑ DN-37 (optional) wiring terminal board.
- ☑ Provide a stable signal source. (For example, dry battery)

■ Self-test wiring as follows:

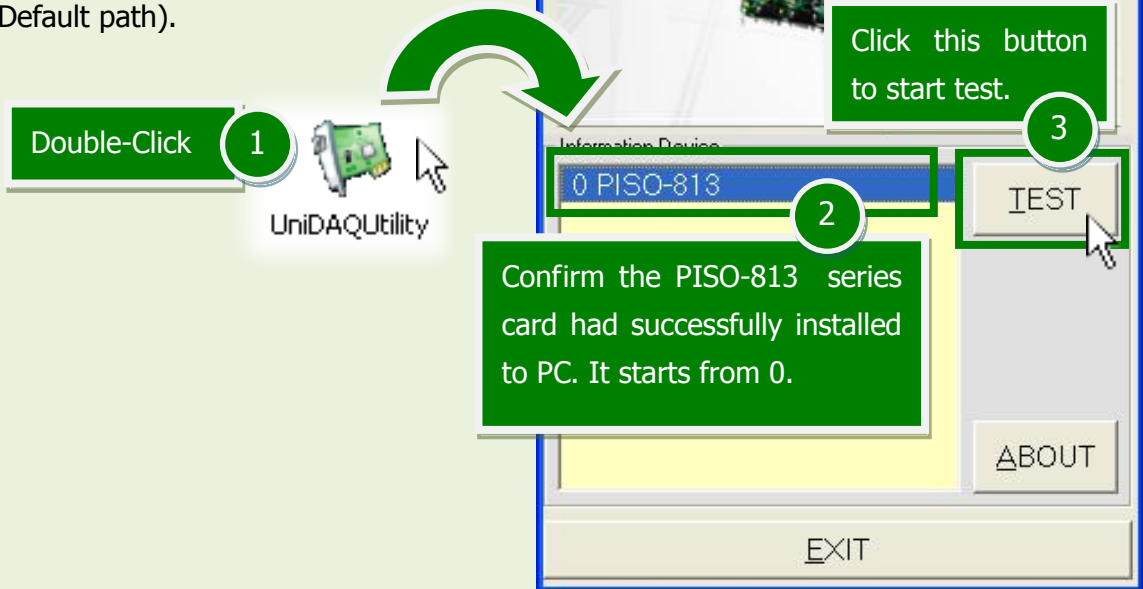
1. Use the DN-37 to connect the CON1 on board.
2. Wire the signal source to channel0, and then keep set the JP1 and JP2 jumper to default (page 3), and wire the signals as follows:



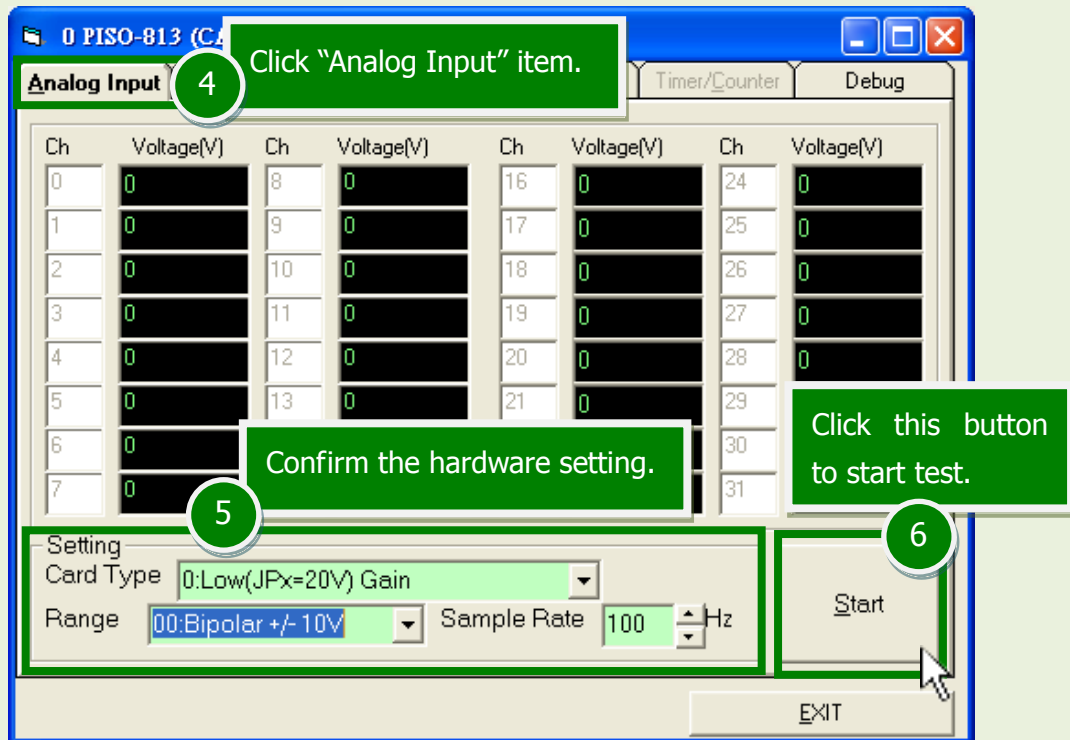
3. Execute the UniDAQ Utility Program.

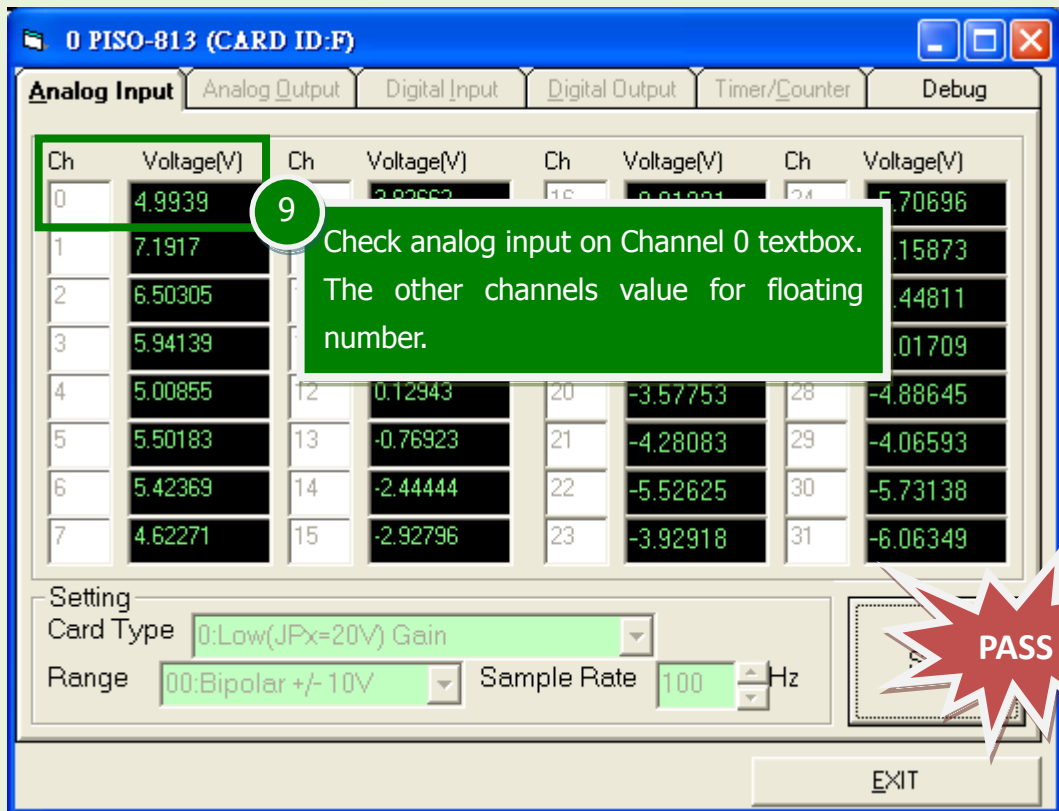
This program (UniDAQ Utility) will be placed in the default path after completing installation.

The UniDAQ Utility.exe is located in:
C:\ICPDAS\UniDAQ\Driver\
(Default path).



4. Get A/D function test result.





7 Related Information

- PISO-813/PISO-813U Card Product Page:
http://www.icpdas.com/root/product/solutions/pc_based_io_board/pci/piso-813.html
- DN-37, CA-3710 and DP-665 page (optional):
http://www.icpdas.com/products/DAQ/screw_terminal/dn_37.htm
http://www.icpdas.com/products/Accessories/cable/cable_selection.htm
- Documentation and Software:
 CD:\NAPDOS\PCI\UniDAQ\
<http://ftp.icpdas.com/pub/cd/iocard/pci/napdos/pci/unidaq/>