



# I/O CARD QUICK START GUIDE

for **A-821PGH/PGL**

<i>Language</i>	English
<i>Version</i>	V1.0
<i>Update</i>	Nov.2008

## 1

### What's on your package?

- One A-821PGH/PGL series card
- One companion ISA CD (V2.1 or later)
- One Quick Start Guide(This document)

## 2

### Installing Windows Driver

#### Follow those steps:




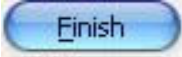
1. Setup the Windows driver. You can get the driver from:

CD:\NAPDOS\ISAA821\DLL\

<http://ftp.icpdas.com/pub/cd/iocard/isa/napdos/isa/a821/dll/>



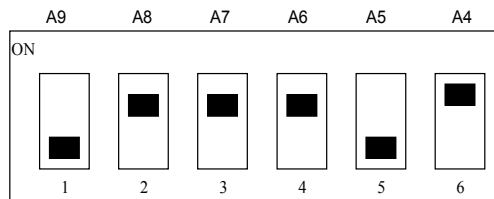
Windows driver only support windows 98/NT/2000 and XP/2003/vista 32-bit versions.

2. Click  button to start installation.
3. Click  button to install driver into the default folder.
4. Click  button to continue installation.
5. Select “**NO, I will restart my computer later**” and then click  button.

# 3

## I/O Base Address Setting

- The base address is set from SW1 DIP switch on board:



SW1 : BASE ADDRESS

Base Adders	A9	A8	A7	A6	A5	A4
200-20F	OFF	ON	ON	ON	ON	ON
210-21F	OFF	ON	ON	ON	ON	OFF
<b>220-22F(☑)</b>	OFF	ON	ON	ON	OFF	ON
230-23F	OFF	ON	ON	ON	OFF	OFF
:	:	:	:	:	:	:
300-30F	OFF	OFF	ON	ON	ON	ON
:	:	:	:	:	:	:
3F0-3FF	OFF	OFF	OFF	OFF	OFF	OFF

(☑) : default base address is 0x220

# 4

## Installing Hardware on PC

**Follow those steps:**

1. Shut down and power off your computer
2. Remove all covers from the computer
3. Select an empty ISA slot
4. Carefully insert your I/O card into the ISA slot
5. Replace the PC covers
6. Power on the computer

After powering-on the computer, continue next process.

# 5

## Adding Hardware



Adding hardware is used on Windows 2000/XP/2003/Vista 32 only. Windows 9X/Me/NT users can skip it.

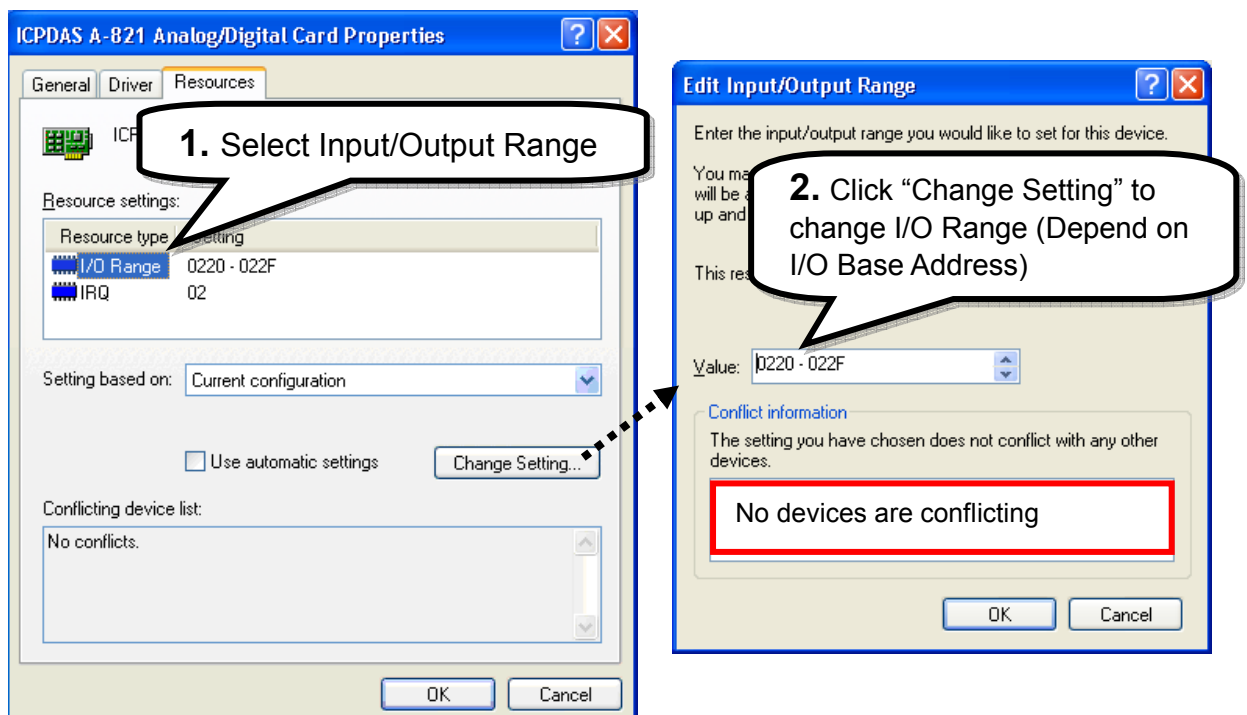
---

### 7. Add Hardware

- 7-1 Open the **“Control Panel”** by click the item **“Start / Settings / Control Panel”**.
- 7-2 Double-click the item **“Add/Remove Hardware”** and Click the **“Next >”** button.
- 7-3 Select the item **“Add/Troubleshoot a device”** and click the **“Next >”** button.
- 7-4 Select the item **“Add a new device”** and click the **“Next >”** button.

- 7-5 Select the item **“No, I want to select the hardware from a list”** and click the **“Next >”** button.
- 7-6 Select the item **“Other device”** and click the **“Next >”** button.
- 7-7 Click the **“Have Disk...”** button.
- 7-8 Click the **“Browse...”** button to select the **Inf** file default path is C:\DAQPro\A821\_WIN2K\Inf and click the **“OK”** button.
- 7-9 Select the correct device from the **“Models:”** listbox and Click the **“Next >”** button.
- 7-10 The windows show to dialog box and Click the **“OK”** button to enter the device’s properties settings.

## 8. Modify the device properties



## 9. Reboot the PC

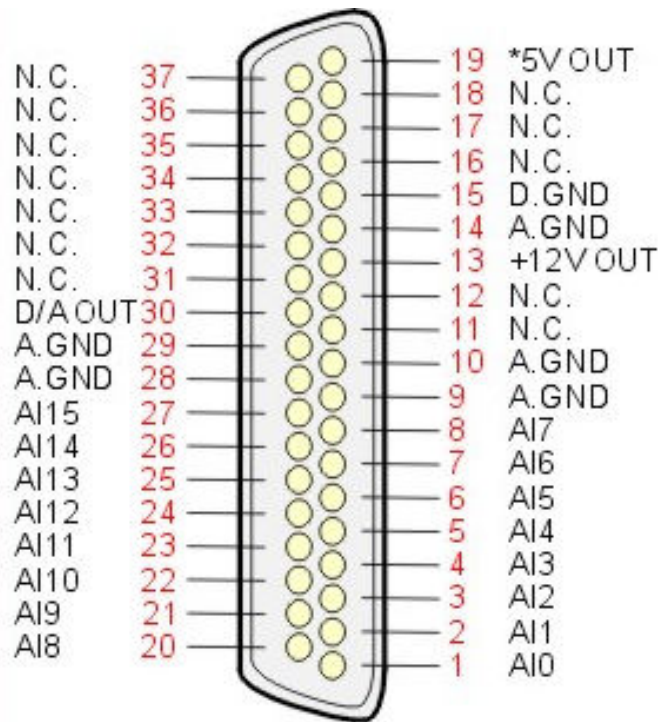
The detail “add hardware” information. Please refer to

CD:\NAPDOSISA\Manual\PCI\_ISA\_PnP\_Driver\_Installation\_in\_Win9x\_2K\_XP.pdf

# 6

## Pin Assignments

- **CN3: Analog input/Analog output Connector.**



- **CN2, CN3: Digital Input/Output Connector.**



The detail pin assignments information. Please refer to :

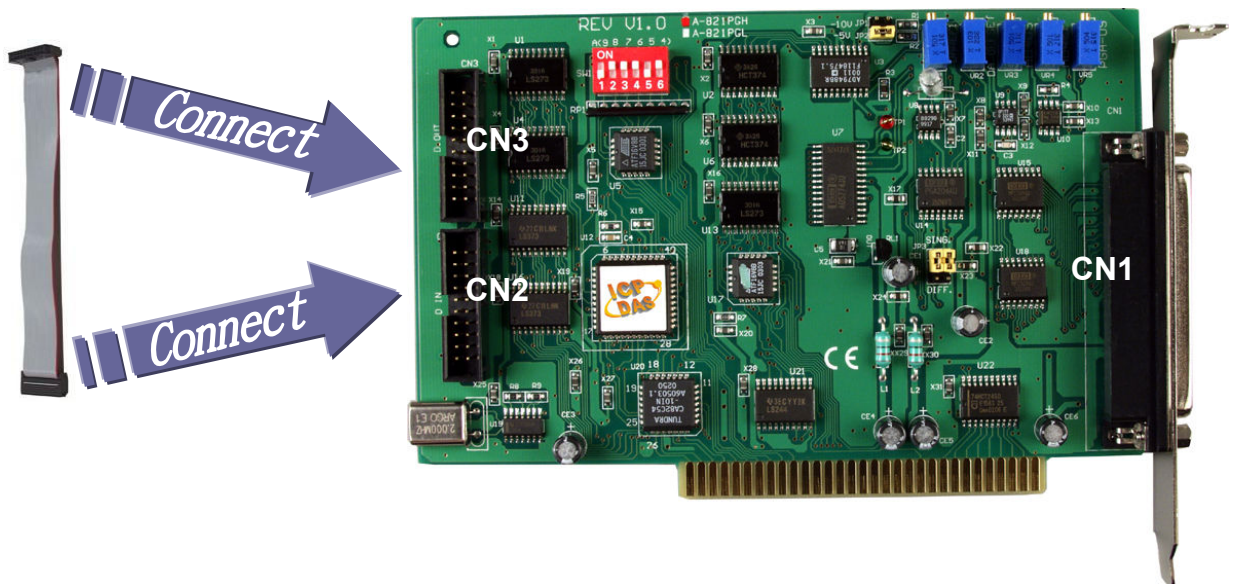
CD:\NAPDOSISA/A826/Manual/821.pdf

<http://ftp.icpdas.com/pub/cd/iocard/isa/napdos/isa/a821/manual/821.pdf>

# 7

## Self-Test

1. Use CA-2002(Optional) to connect the CN2 with CN3.



2. Run the A-821 sample program.

Get the file from(Default):

C:\DAQPro\A821 Win xx\DEMO

### 3. Check number of the A-821, and test DIO function.

The screenshot shows the 'DI/DO Demo' software window. It has a blue title bar and a green border. The interface is divided into several sections:

- Digital Output Set:** A green panel with two rows of checkboxes. The first row is labeled 0-7, and the second row is labeled 8-F. All checkboxes are currently unchecked.
- Digital Input Status:** A yellow panel with two rows of circular indicators. The first row is labeled 0-7, and the second row is labeled 8-F. All indicators are currently black.
- Board Setting:** A purple panel on the right with two dropdown menus. 'Total' is set to '1' and 'Active' is set to '0'.
- Buttons:** 'Active' and 'Exit' buttons are located at the bottom right.

Three callout boxes provide instructions:

1. The one A-821 had successfully installed to PC.
2. Select the board number for the A-821. It starts from 0.
3. Click this button to do DIO test.

### 4. Get DIO function test result.

The screenshot shows the 'DI/DO Demo' software window after a test. The interface is similar to the previous screenshot but with the following changes:

- Digital Output Set:** Checkboxes for channels 0, 2, 4, and 6 are now checked.
- Digital Input Status:** The circular indicators for channels 0, 2, 4, and 6 are now red, indicating a high state.
- Buttons:** The 'Active' button has been replaced by a 'Stop' button.

Two callout boxes provide instructions:

4. Click the channel 0, 2, 4, 6 in the DO.
5. DI show to channel 0, 2, 4, 6 for high state. (Red light)

A large orange starburst graphic at the bottom right contains the word **Complete**.

# 8

## Additional Information

✓ **A-821 Series Card Product page:**

[http://www.icpdas.com/products/DAQ/pc\\_based/a-821.htm](http://www.icpdas.com/products/DAQ/pc_based/a-821.htm)

✓ **CA-2002(Optional) page:**

[http://www.icpdas.com/products/Accessories/cable/cable\\_selection.htm](http://www.icpdas.com/products/Accessories/cable/cable_selection.htm)

✓ **Documents:**

CD:\NAPDOS\ISAA821\manual

<http://ftp.icpdas.com/pub/cd/iocard/isa/napdos/isa/a821/manual/>

✓ **Software:**

CD:\NAPDOS\ISAA821

<http://www.icpdas.com/download/isa/a821/index.htm>

### The ICP DAS Web Site

<http://www.icpdas.com>



### Contact Us

[Service@icpdas.com](mailto:Service@icpdas.com)

- Technical support
- Supplies and ordering information
- Ways to enhance your device
- FAQ
- Application story

Copyright ©2008 by ICP DAS Co., Ltd. All right are reserved