



## Industrial Quad-band GPRS/GSM Modem

### GTM-201-USB

#### Quick Start Manual

#### Package Checklist

The package includes the following items:

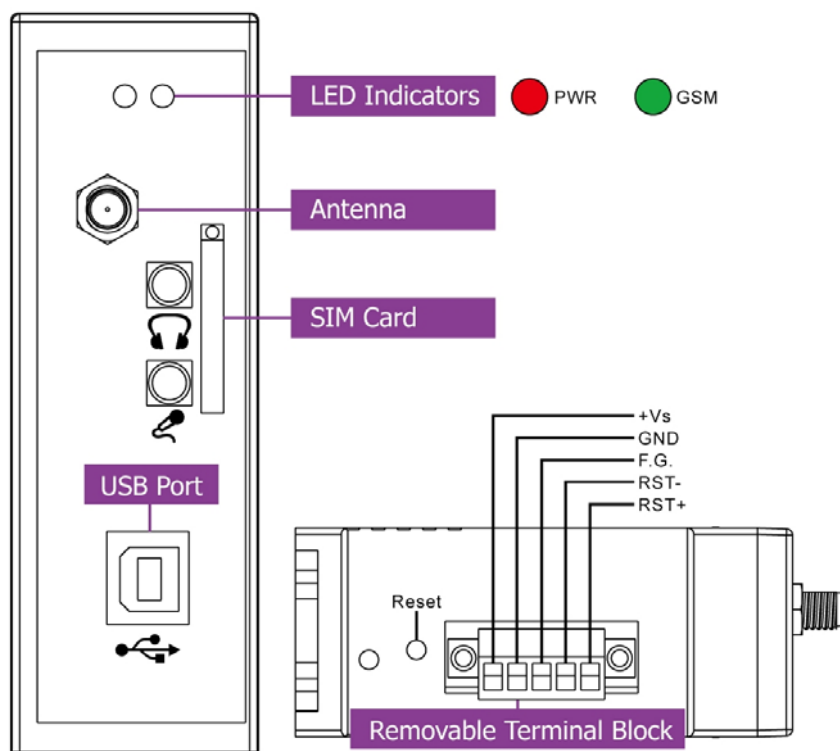
- One GTM-201-USB hardware module
- One Quick Start Manual (this manual)
- One companion CD
- One USB Type A to Type B connector cable (CA-USB18)
- One GPRS antenna

#### Related Documents and Software Utilities

##### Documents

- User manual: GTM-201\_User\_Manual
- Quick Start Manual: GTM-201-USB\_QuickStart\_Manual
- CD: \napdos\GPRS\_GSM\_Modem\GTM-201\_Modem\Manual
- [http://ftp.icpdas.com/pub/cd/usbcd/napdos/gprs\\_gsm\\_modem/gtm-201\\_modem/manual/](http://ftp.icpdas.com/pub/cd/usbcd/napdos/gprs_gsm_modem/gtm-201_modem/manual/)

#### ➤ View of the GTM-201-USB Panel

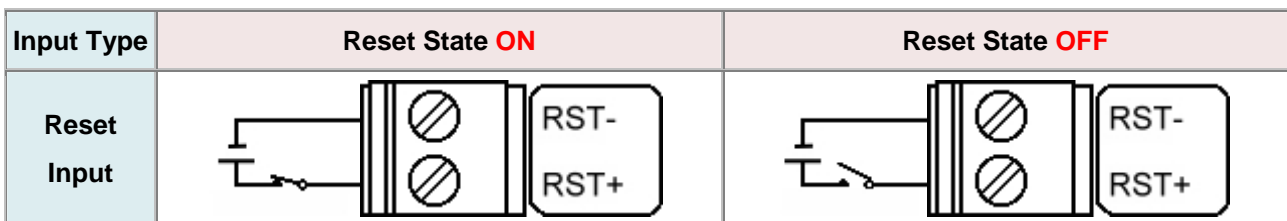


## Pin Assignments

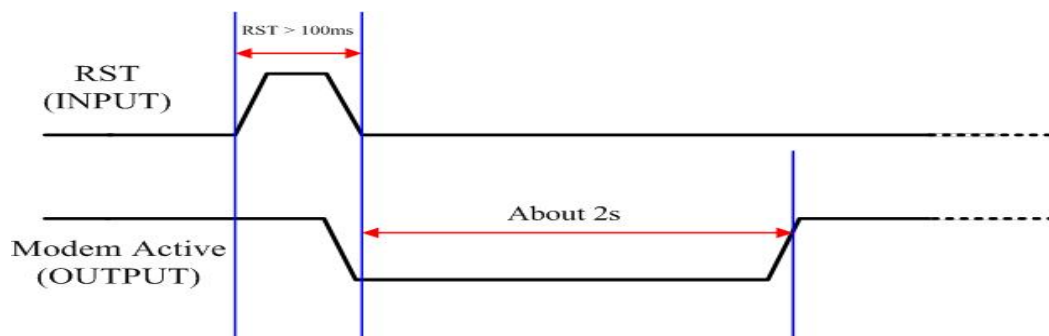


RESET	RST+
	RST-
Frame Ground	F.G.
Power Input: +10 ~ 30V <sub>DC</sub>	DC.GND
	DC.+VS

### ➤ Reset Wire Connection

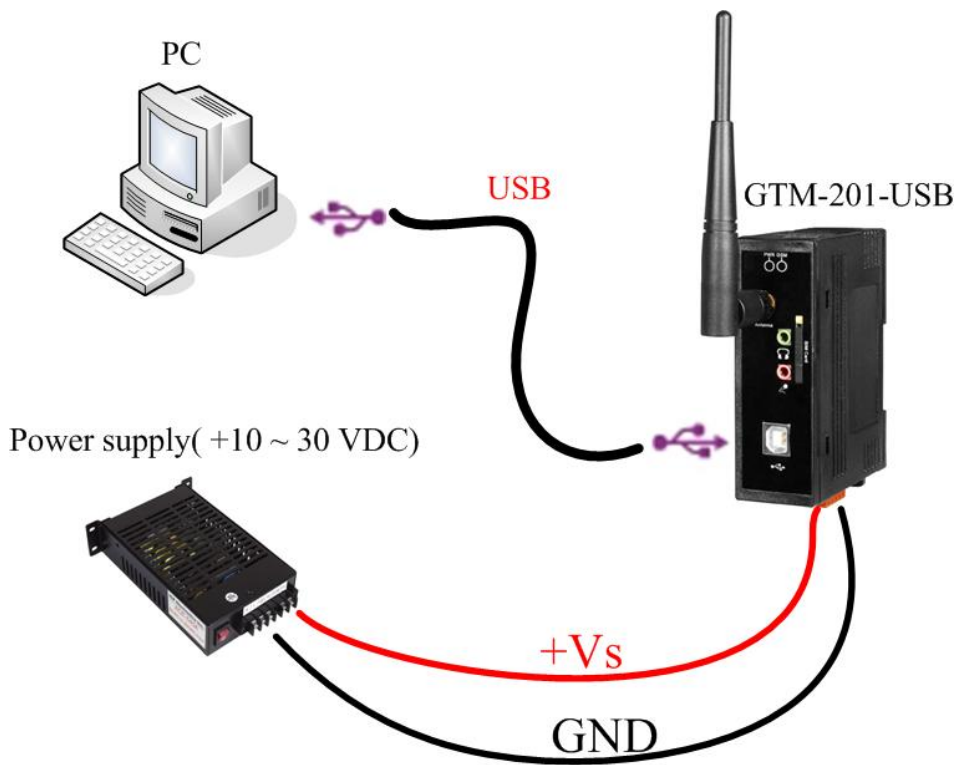


Reset Input	
<b>ON</b> Voltage Level	+3.5 V <sub>DC</sub> ~ +30 V <sub>DC</sub>
<b>OFF</b> Voltage Level	+1 V <sub>DC</sub> max.



Timing of restart Modem

➤ **Connect the GTM-201-USB to power and PC**



➤ **SIM card and Antenna Installation**



## ➤ USB Driver Installation(XP)

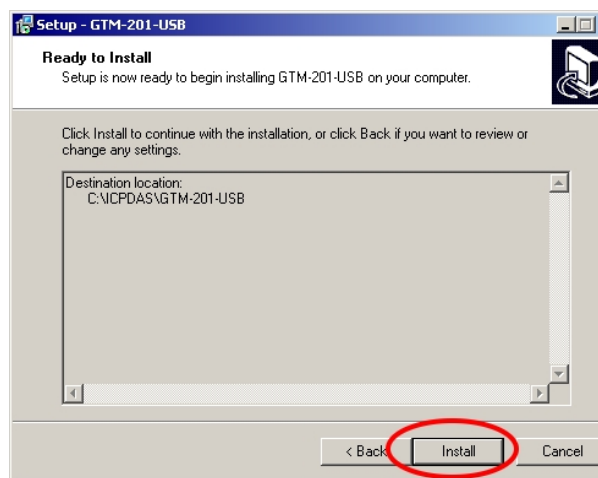
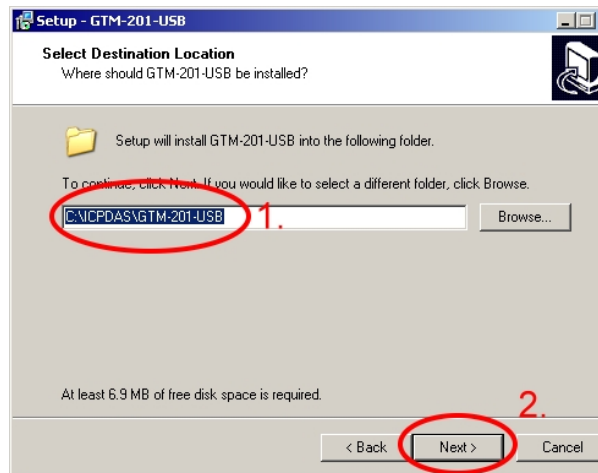
Step1. Connect the GTM-201-USB and XPAC hardware with the USB cable , then power on.

Step2. If pop up a new window that “Found New Hardware Wizard”, please select “Cancel”

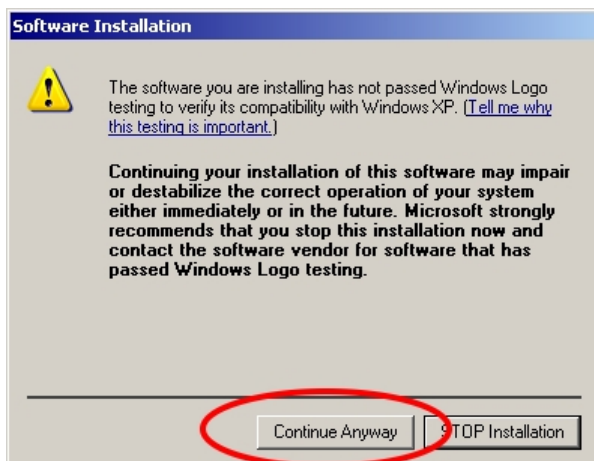


Step3. Double-click GTM-201-USB driver that “GTM-201-USB\_v1.00.exe”.

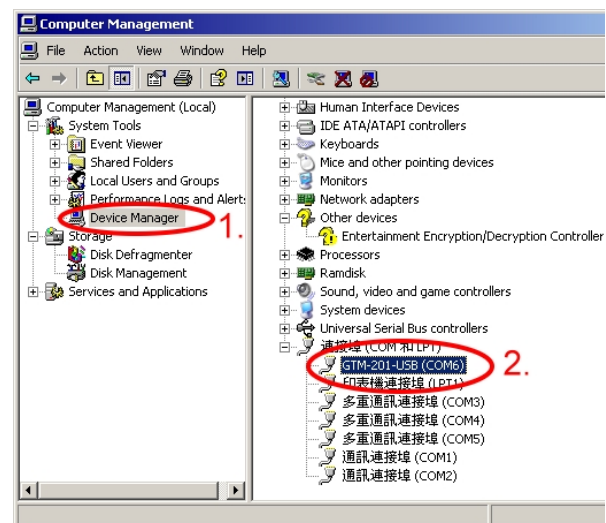
Step4. Select “Next” → Select install folder → Select “Next”



Step5. If the installation process has popped up new window that “Software Installation”, please select “Continue Anyway”



Step6. Please open “Device Manager” to check com port (GTM-201-USB (COMx)).



➤ **Quick Test  
(Hyper Terminal)**

Step1. Start → All Programs → Accessories → Communications → Hyper Terminal → Input new connection name → Click “OK” → Select your PC serial port → Click “OK”



Step2. Please refer to the following settings

Bits per second	115200
Data bits	8
Parity	None
Stop bits	1
Flow control	None

Step3. File → Properties → Settings → Click “ASCII Setup...” → Select “Echo typed character locally” → OK

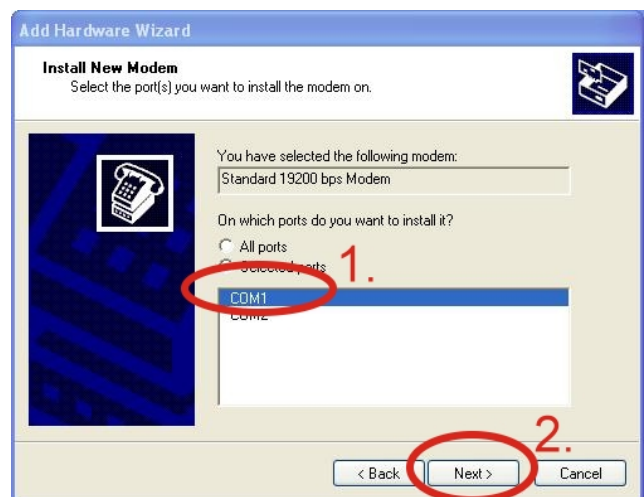
Step4. Input “AT” and press “Enter”, then you will receive “AT OK”

➤ **Create a new modem connection on PC**

Step1. Control Panel → Double-click “Phone and Modem Options” → Modem → Click “Add”

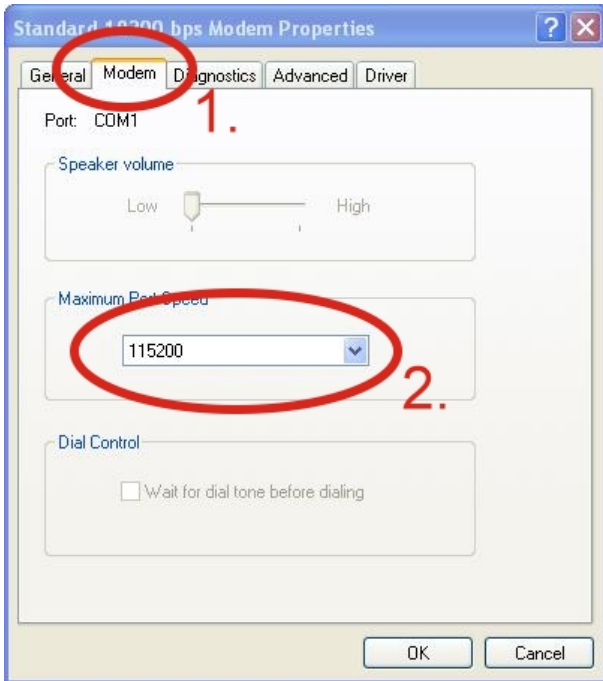
Step2. Select “Standard Modem Types” → Select “Standard 19200 bps Modem” → Click “Next”

Step3. Select your COM Port to connect the modem → Click “Next” → Click “Finish”



Step4. Control Panel → Double-click “Phone and Modem Options” → Modem → Select “Standard 19200 bps Modem” → Click “Properties”

Step5. Control Panel → Double-click “Phone and Modem Options” → Modem → Select “Standard 19200 bps Modem” → Click “Properties” → Modem → Maximum Port Speed → 115200



Step6. Advanced → Extra initialization commands:

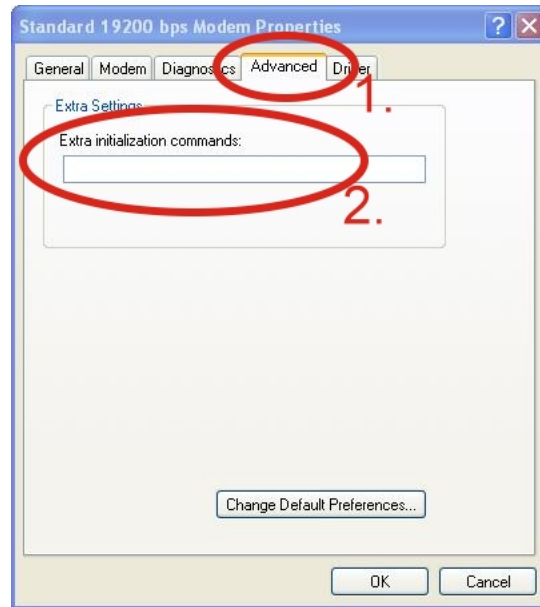
**Note:** GPRS’s APN must be provided from your Telecom. CO., LTD.

For example in Taiwan:

AT+CGDCONT=1,“IP”,“INTERNET”

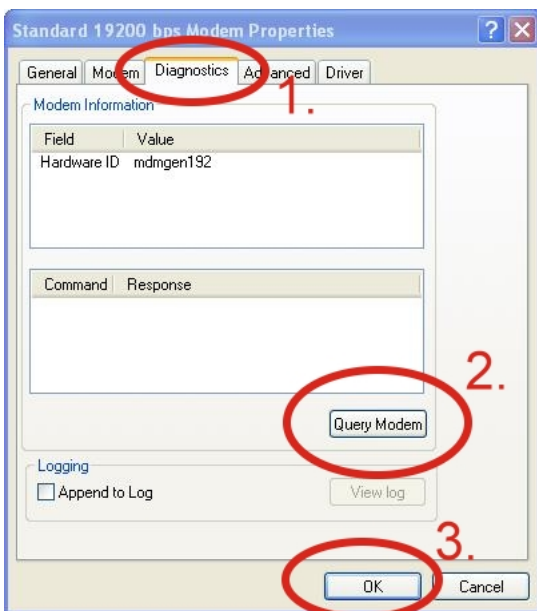
For example in China:

AT+CGDCONT=1,“IP”,“CMNET”

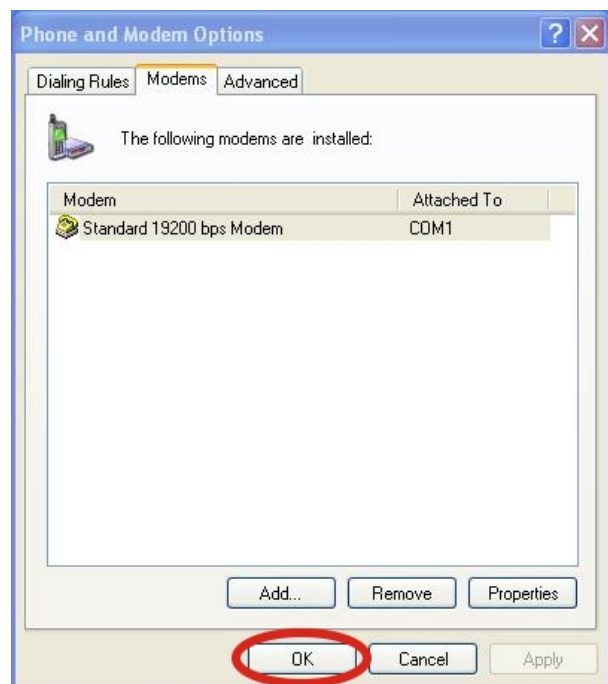


Step7. Diagnostics → Query Modem → Click “OK”

**Note:** If user queries modem that gets a Error, please try again.



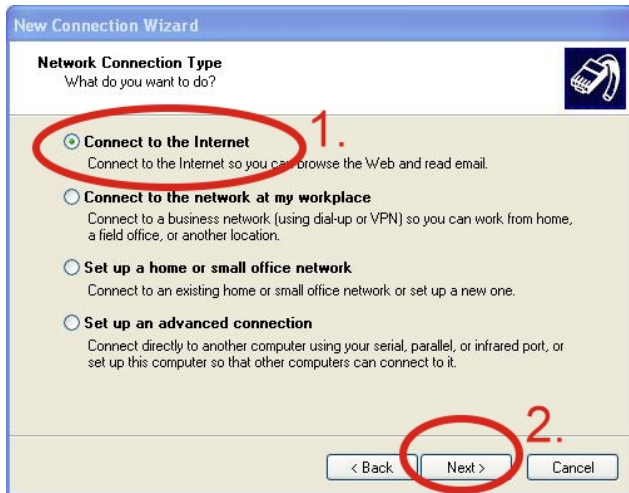
Step8. Click “OK”



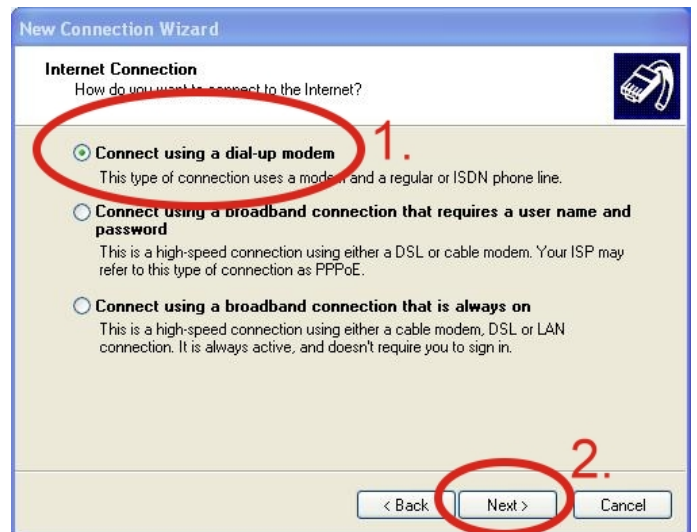


## ➤ Create a new dial-up on a PC

Step1. Control Panel → Network Connections → Click “Create a new connection” → Click “Next” → Select “Connect to the Internet” → Click “Next”



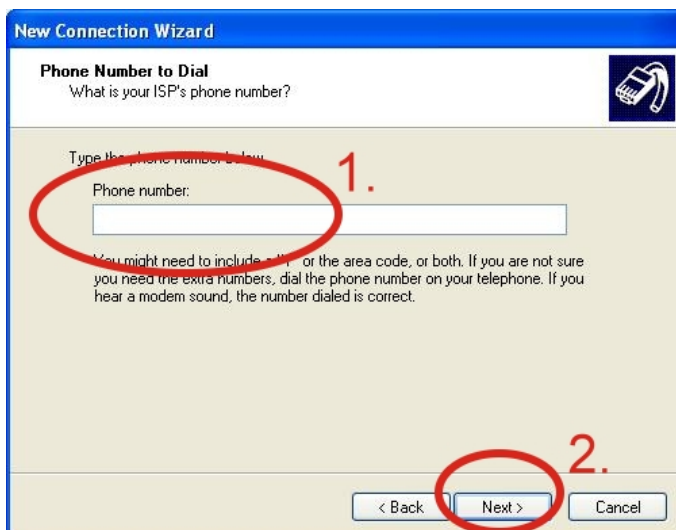
Step2. Select “Connect using a dial-up modem” → Click “Next”



Step3. Your GPRS's name → Click “Next” → Phone Number: → Click “Next”

**Note:** Phone Number must be provided from your Telecom. CO., LTD.

**For example in Taiwan:** \*99\*\*\*1#

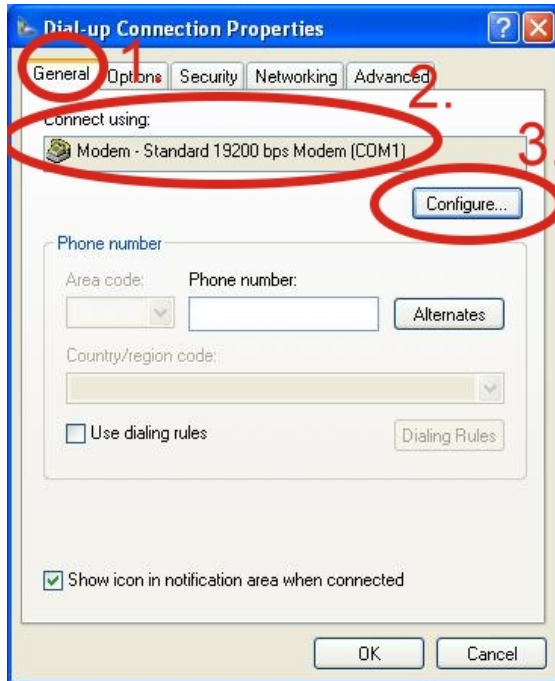


Step4. GPRS's User name and GPRS's Password → Click “Next” → Click “Finish”

**Note:** GPRS's User name and GPRS's Password must be provided from your Telecom. CO., LTD.



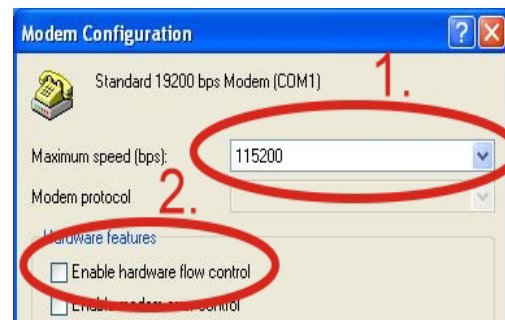
Step5. Contral Panel →  
 Network Connections →  
 Click “Your GPRS’s name” → File  
 → Properties → General →  
 Select ”Standard 19200 bps Modem”  
 → Click “Configure”



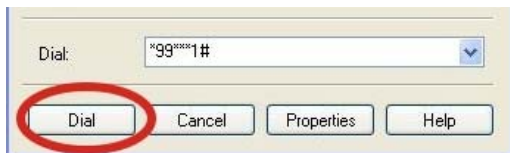
Step6. Maximum speed(bps) →  
 Select ”115200” →  
 Enable hardware flow control (Note)  
 → Click “OK”

Note :

GTM-201-RS232 “RTS/CTS” mode	Please <b>select</b> “Enable hardware flow control”
GTM-201-USB	Please <b>don't</b> select “Enable hardware flow control”



Step7. Contral Panel → Network  
 Connections → Double-Click “Your  
 GPRS’s name” → Click “Dial”



Step8. If you connect to internet  
 successfully, your toolbar have  
 new logo



## ➤ Technical Support

1. ICP DAS Service : [service@icpdas.com](mailto:service@icpdas.com)

2. GTM-201-USB software Website:

[http://www.icpdas.com./products/GSM\\_GPRS/wireless/  
 GTM-201.htm](http://www.icpdas.com./products/GSM_GPRS/wireless/GTM-201.htm)