

Industrial Quad-band GPRS/GSM Modem

GTM-201-RS232

Quick Start Manual

Package Checklist

The package includes the following items:

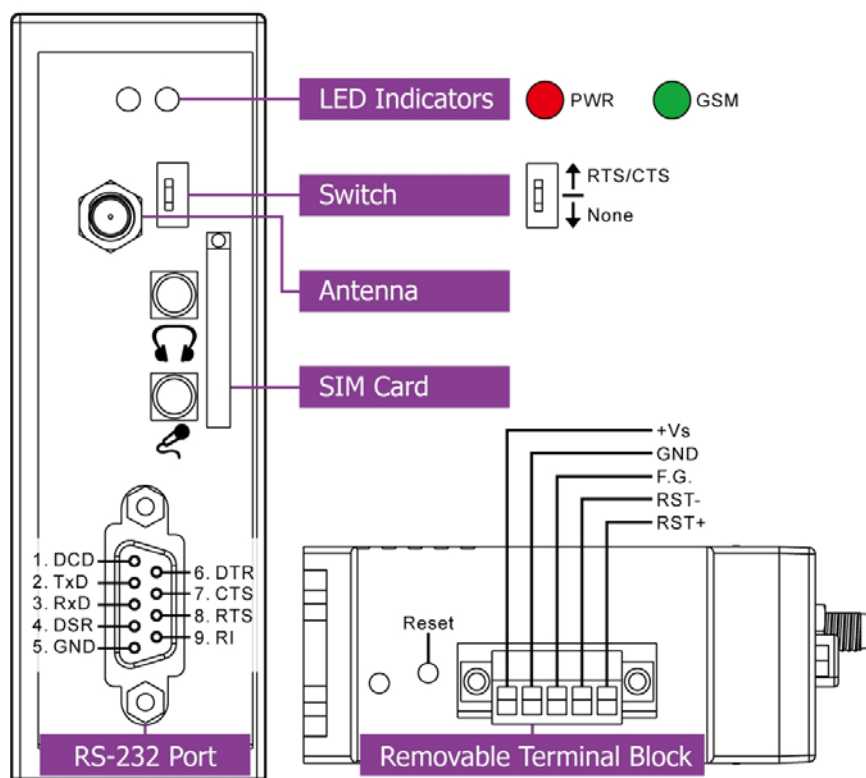
- One GTM-201-RS232 hardware module
- One Quick Start Manual (this manual)
- One companion CD
- One RS-232 9-pin Male-Female D-sub cable (CA-0915)
- One GPRS antenna

Related Documents and Software Utilities

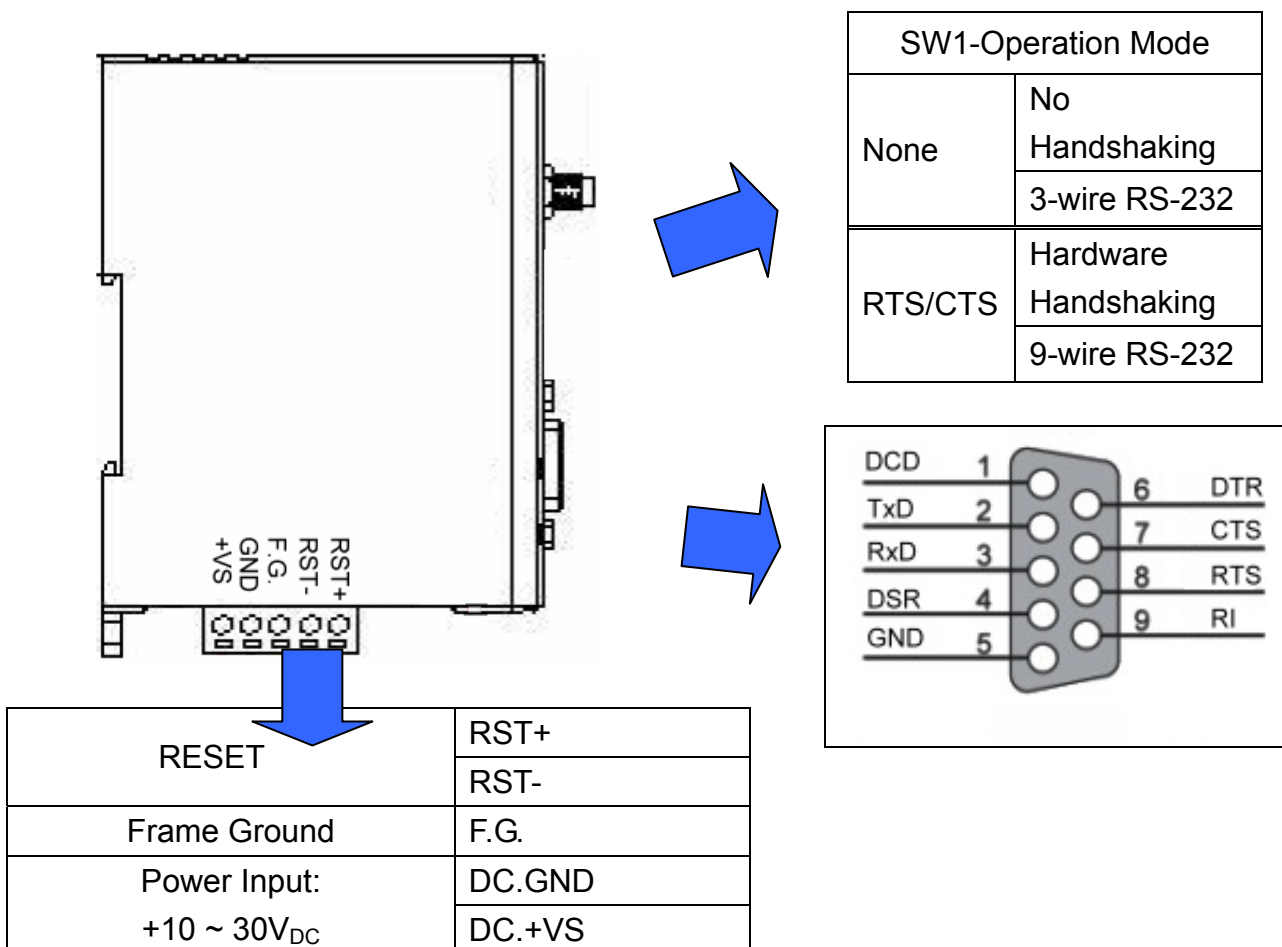
Documents

- User manual: GTM-201_User_Manual
- Quick Start Manual: GTM-201-RS232_QuickStart_Manual
- CD: \napdos\GPRS_GSM_Modem\GTM-201_Modem\Manual
- [Http://ftp.icpdas.com/pub/cd/usbcd/napdos/GPRS GSM Modem/GTM-201 Modem/Manual](http://ftp.icpdas.com/pub/cd/usbcd/napdos/GPRS_GSM_Modem/GTM-201_Modem/Manual)

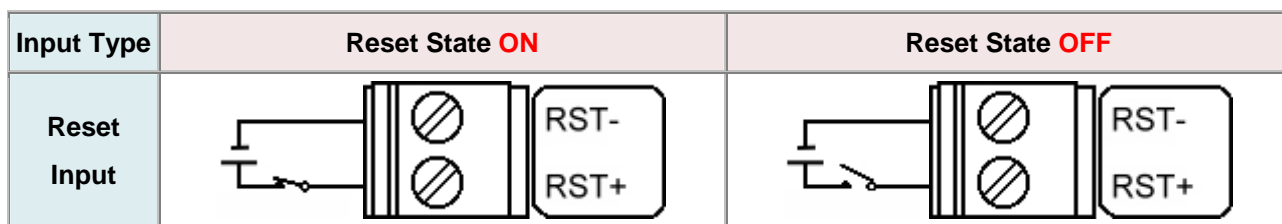
➤ View of the GTM-201-RS232 Panel



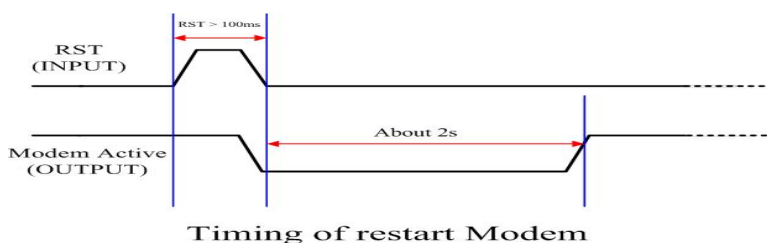
Pin Assignments



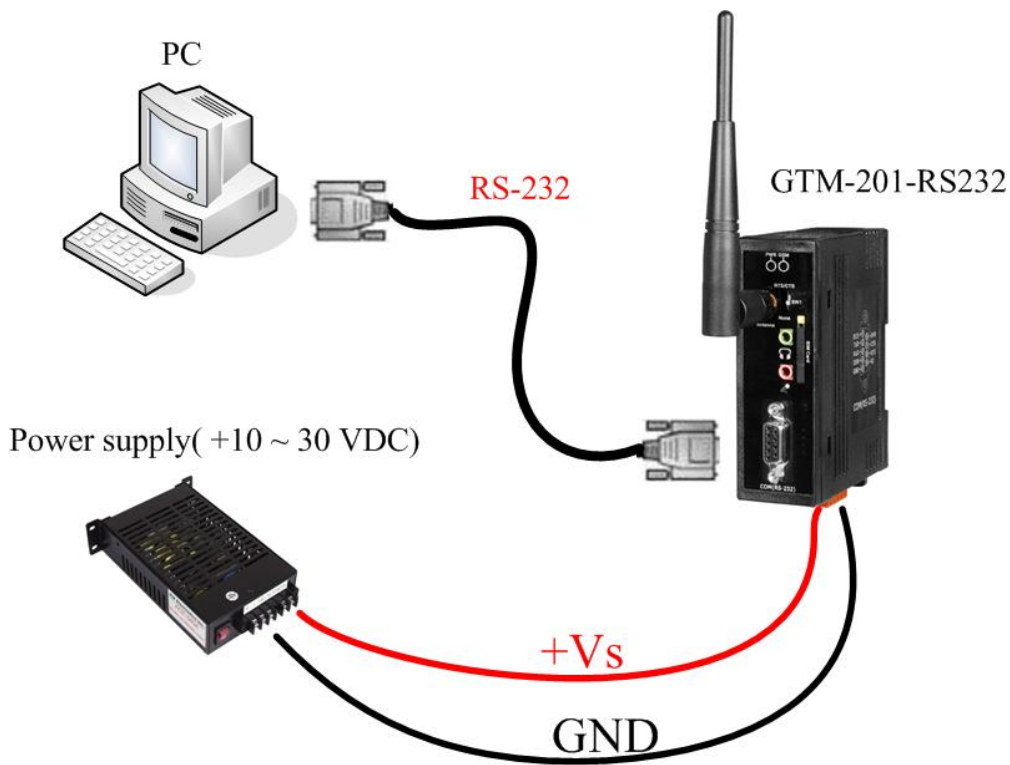
➤ Reset Wire Connection



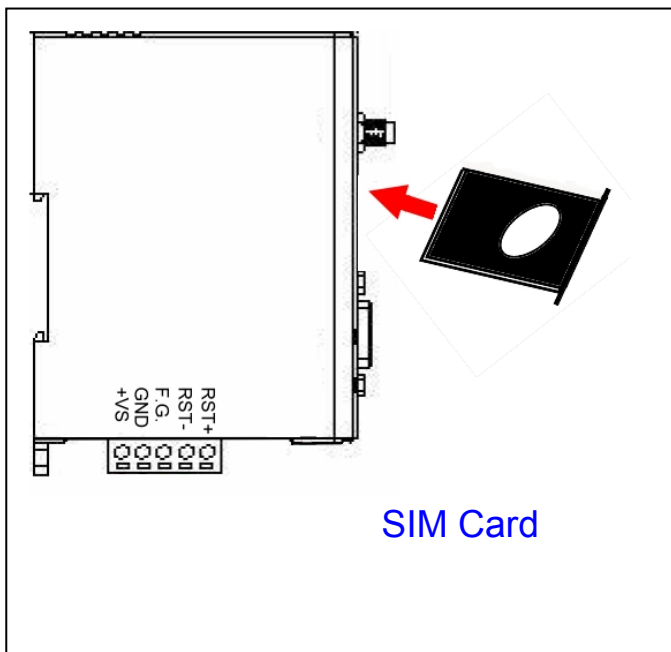
Reset Input	
ON Voltage Level	+3.5 V _{DC} ~ +30 V _{DC}
OFF Voltage Level	+1 V _{DC} max.



➤ **Connect the GTM-201-RS232 to power and PC**



➤ **SIM card and Antenna Installation**

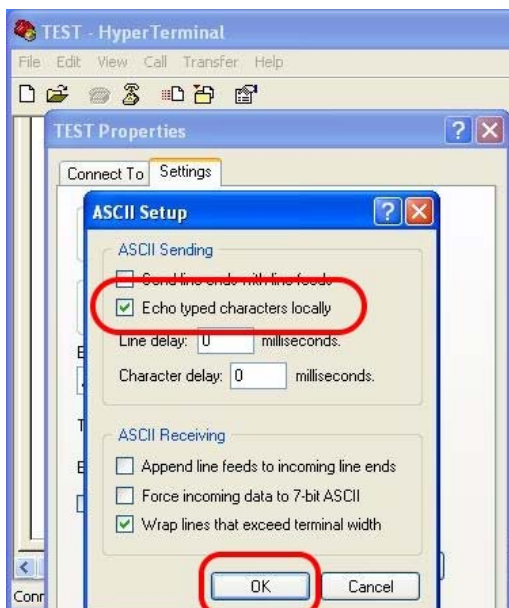


➤ Quick Test (Hyper Terminal)

Step1. Start → All Programs → Accessories → Communications → Hyper Terminal → Input new connection name → Click “OK” → Select your PC serial port → Click “OK”



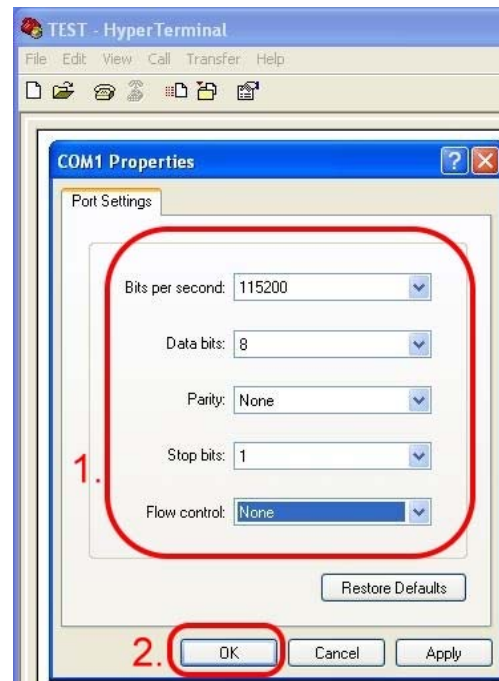
Step3. File → Properties → Settings → Click “ASCII Setup...” → Select “Echo typed character locally” → OK



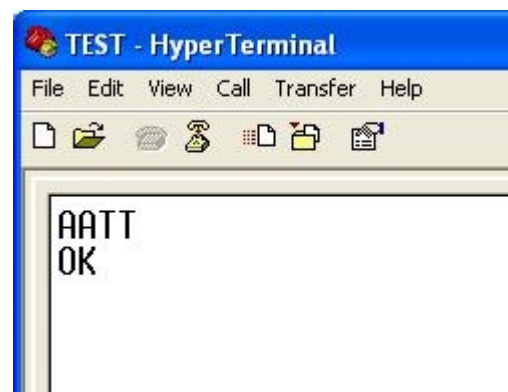
Step2. Please refer to below settings

Bits per second	115200
Data bits	8
Parity	None
Stop bits	1
Flow control	None

Note: Please select “None” mode on the GTM-201-RS232 **SW1** Hardware

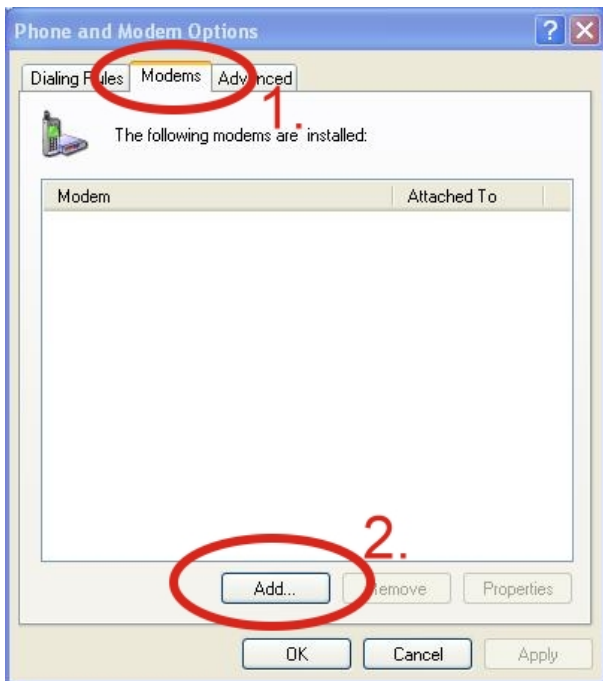


Step4. Input “AT” and press “Enter”, then you will receive “AT OK”

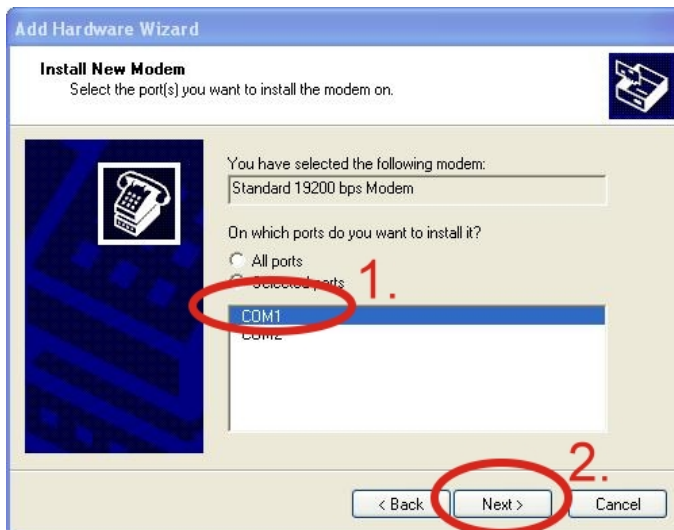


➤ Create a new modem connection on PC

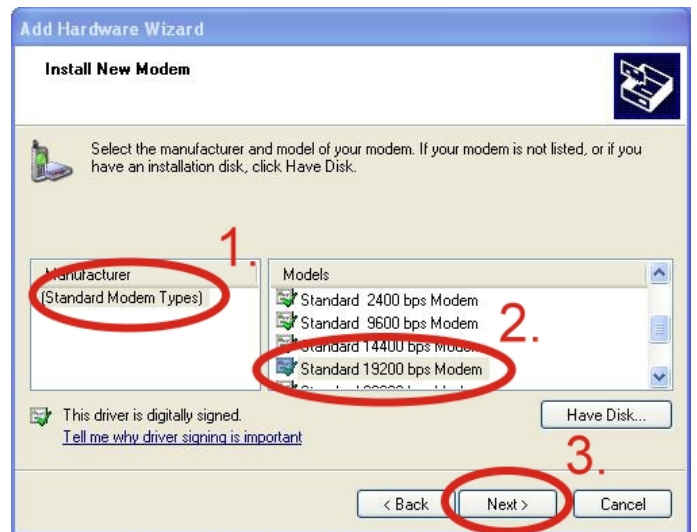
Step1. Control Panel → Double-click “Phone and Modem Options” → Modem → Click “Add”



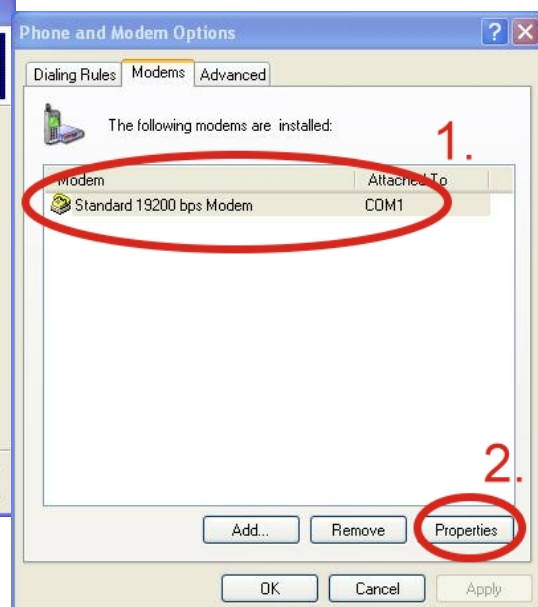
Step3. Select your COM Port to connect the modem → Click “Next” → Click “Finish”



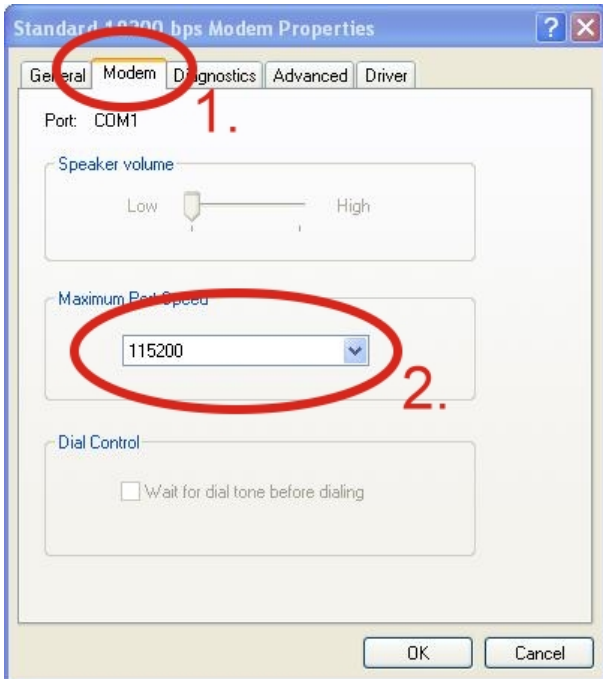
Step2. Select “Standard Modem Types” → Select “Standard 19200 bps Modem” → Click “Next”



Step4. Control Panel → Double-click “Phone and Modem Options” → Modem → Select “Standard 19200 bps Modem” → Click “Properties”



Step5. Control Panel → Double-click “Phone and Modem Options” → Modem → Select “Standard 19200 bps Modem” → Click “Properties” → Modem → Maximum Port Speed → 115200



Step6. Advanced → Extra initialization commands:

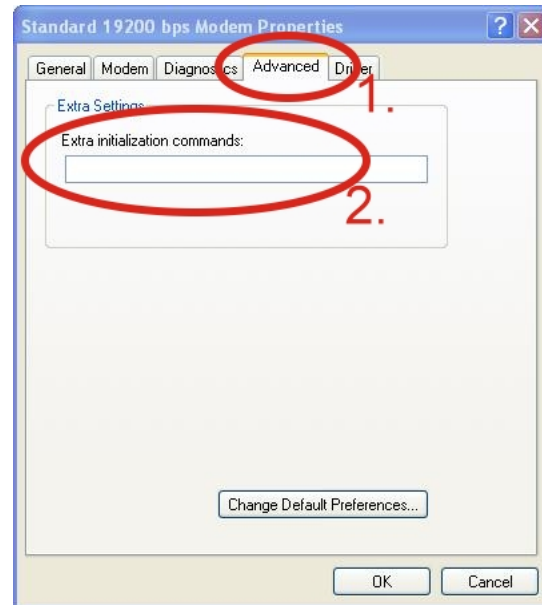
Note: GPRS’s APN must be provided from your Telecom. CO., LTD.

For example in Taiwan:

AT+CGDCONT=1,"IP","INTERNET"

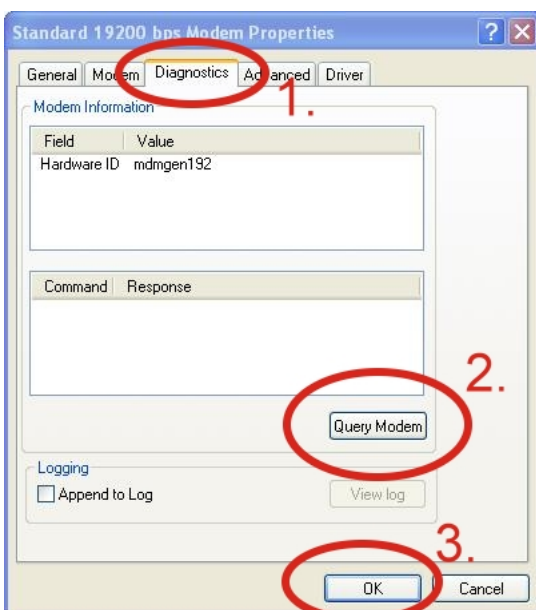
For example in China:

AT+CGDCONT=1,"IP","CMNET"

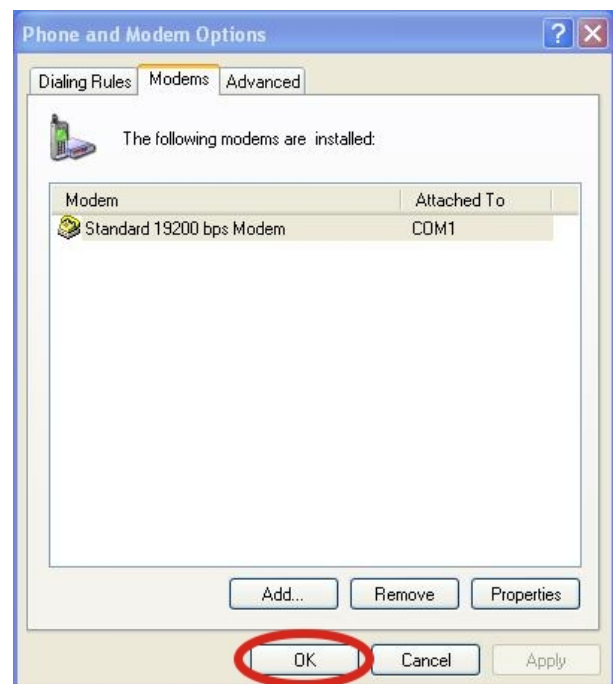


Step7. Diagnostics → Query Modem → Click “OK”

Note: If user queries modem that gets a Error, please try again.

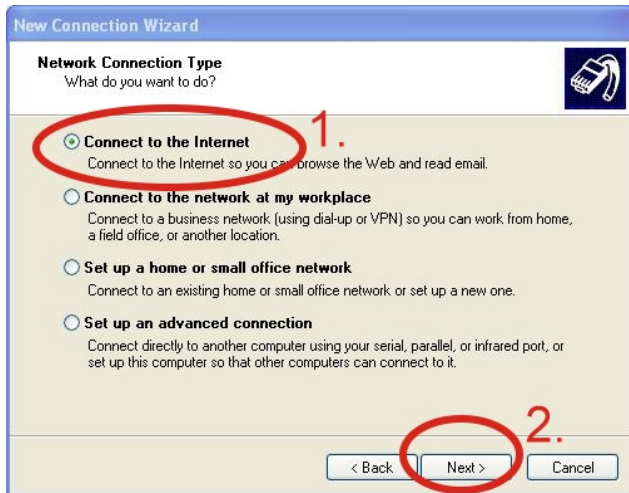


Step8. Click “OK”

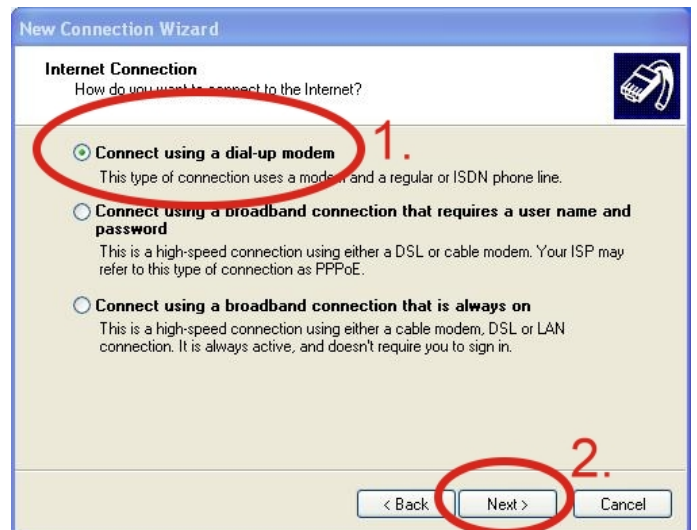


➤ Create a new dial-up on a PC

Step1. Control Panel → Network Connections → Click “Create a new connection” → Click “Next” → Select “Connect to the Internet” → Click “Next”



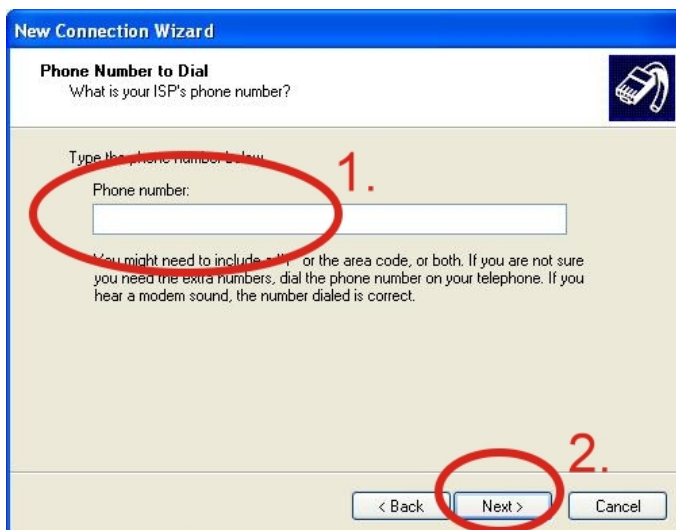
Step2. Select “Connect using a dial-up modem” → Click “Next”



Step3. Your GPRS's name → Click “Next” → Phone Number: → Click “Next”

Note: Phone Number must be provided from your Telecom. CO., LTD.

For example in Taiwan: *99***1#

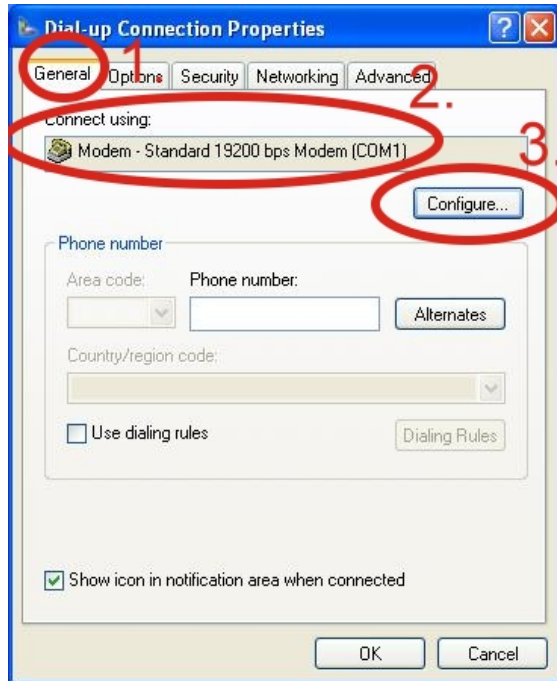


Step4. GPRS's User name and GPRS's Password → Click “Next” → Click “Finish”

Note: GPRS's User name and GPRS's Password must be provided from your Telecom. CO., LTD.



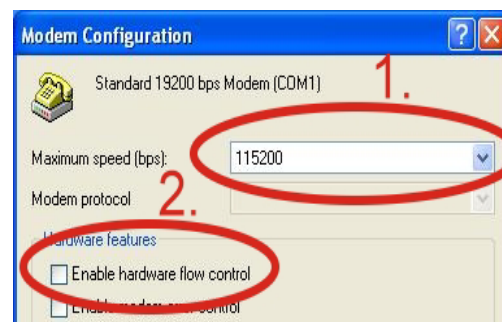
Step5. Control Panel →
 Network Connections →
 Click “Your GPRS’s name” → File
 → Properties → General →
 Select ”Standard 19200 bps Modem”
 → Click “Configure”



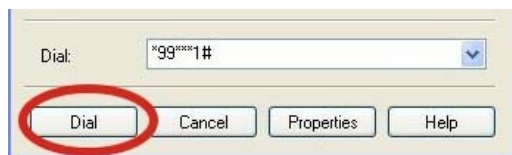
Step6. Maximum speed(bps) →
 Select ”115200” →
 Enable hardware flow control (Note)
 → Click “OK”

Note :

GTM-201-RS232 “RTS/CTS” mode	Please select “Enable hardware flow control”
GTM-201-USB	Please don't select “Enable hardware flow control”



Step7. Control Panel → Network
 Connections → Double-Click “Your
 GPRS’s name” → Click “Dial”



Step8. If you connect to internet
 successfully, your toolbar have
 new logo



➤ Technical Support

1. ICP DAS Service : service@icpdas.com

2. GTM-201-RS232 software Website:

http://www.icpdas.com./products/GSM_GPRS/wireless/GTM-201.htm