



## Industrial Tri-band 3G Modem

### GTM-201-3GWA

#### Quick Start

#### Package Checklist

The package includes the following items:

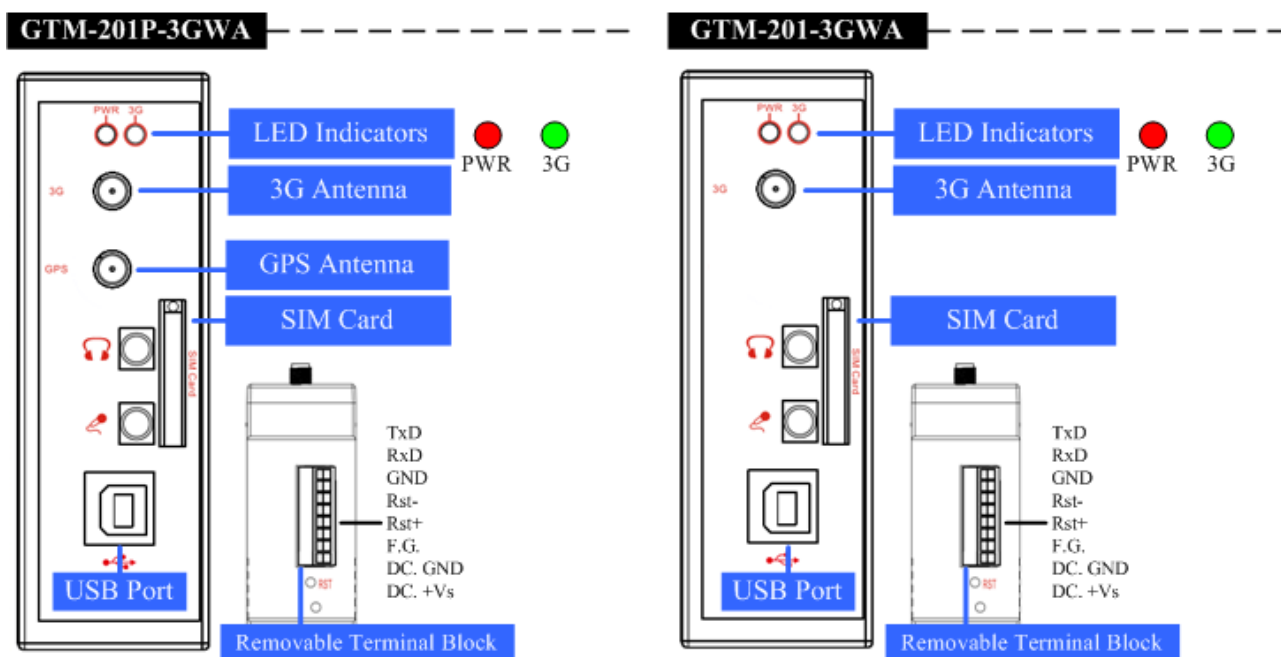
- One GTM-201-3GWA hardware module
- One Quick Start (this manual)
- One companion CD
- One USB Type A to Type B connector cable (CA-USB18)
- One 3G/GSM antenna (ANT-421-02)
- One GPS antenna (ANT-115-03) (only for GTM-201P-3GWA)

#### Related Documents and Software Utilities

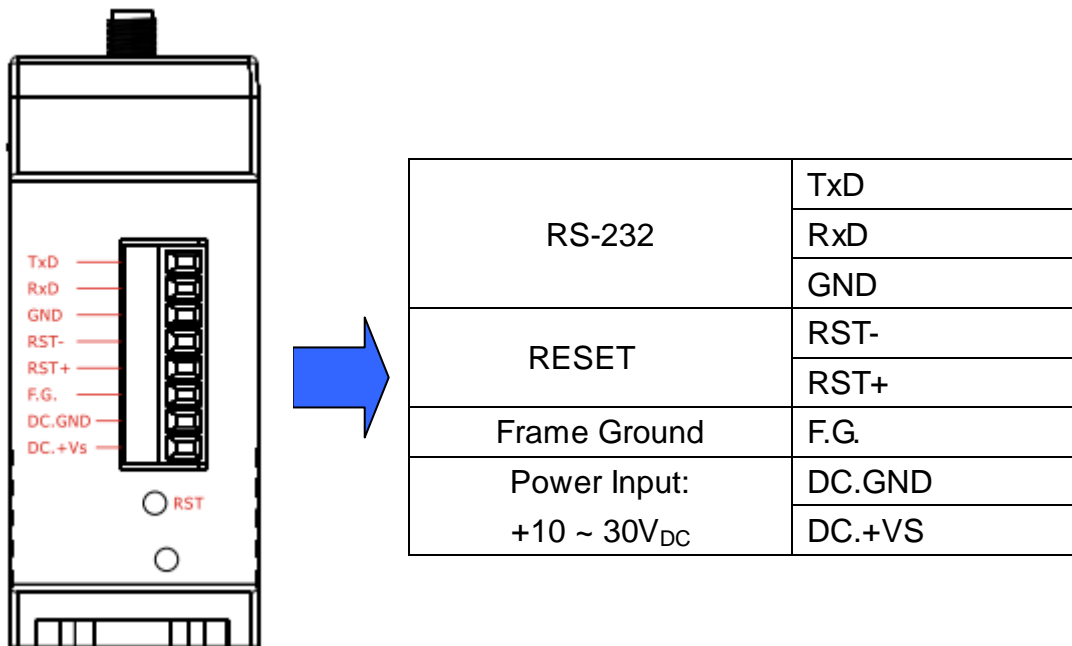
##### Documents

- User manual: GTM-201-3GWA\_User\_Manual
- Quick start: GTM-201-3GWA\_QuickStart
- CD: \napdos\3G\_Modem\GTM-201-3GWA\Manual
- [http://ftp.icpdas.com/pub/cd/usbcd/napdos/3G\\_modem/GTM-201-3GWA/manual/](http://ftp.icpdas.com/pub/cd/usbcd/napdos/3G_modem/GTM-201-3GWA/manual/)

#### ➤ View of the GTM-201-3GWA Panel



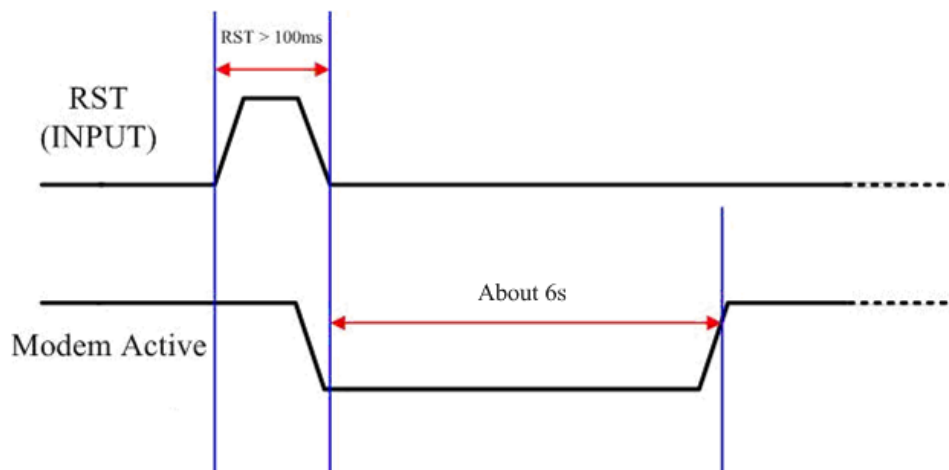
## Pin Assignments



### ➤ Reset Wire Connection

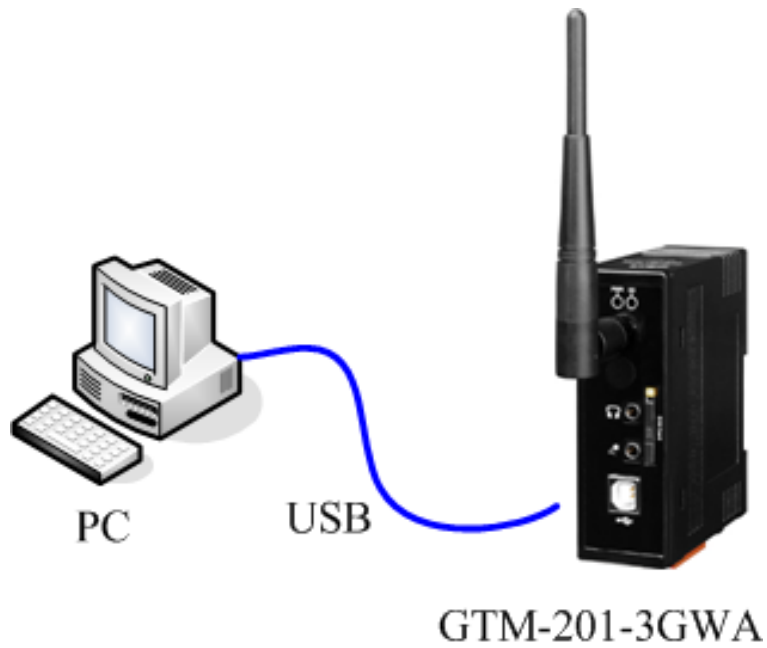


Reset Input	
<b>ON</b> Voltage Level	+3.5 V <sub>DC</sub> ~ +30 V <sub>DC</sub>
<b>OFF</b> Voltage Level	+1 V <sub>DC</sub> max.



Timing of restarting the modem

➤ **Connect the GTM-201-3GWA to PC**



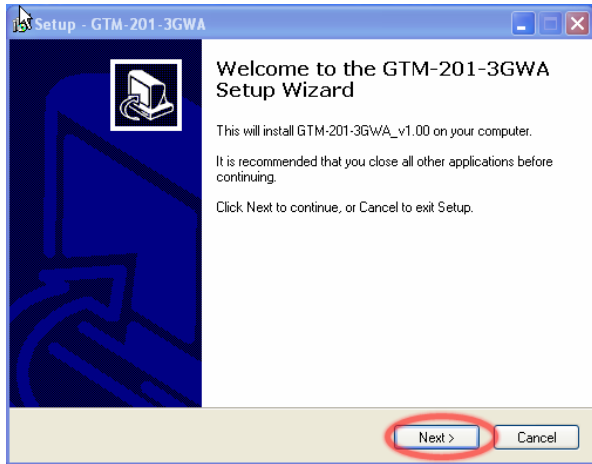
➤ **SIM card and Antenna Installation**



➤ **USB Driver Installation(XP)**

Step1. Double Click GTM-201-3GWA driver “GTM-201-3GWA.exe” to install the driver.

Step2. Click “Next”.



Step3. Click “Next” until finishing installation



Step4. Connect the USB of GTM-201-3GWA with the PC

Step5. The “Found New Hardware Wizard” window will pop-out. Please click “Next” until finishing installation

\*All 5 items for installation:

“GTM-201-3GWA Diagnostics”

“GTM-201-3GWA NMEA”

“GTM-201-3GWA AT Port”

“GTM-201-3GWA Modem”

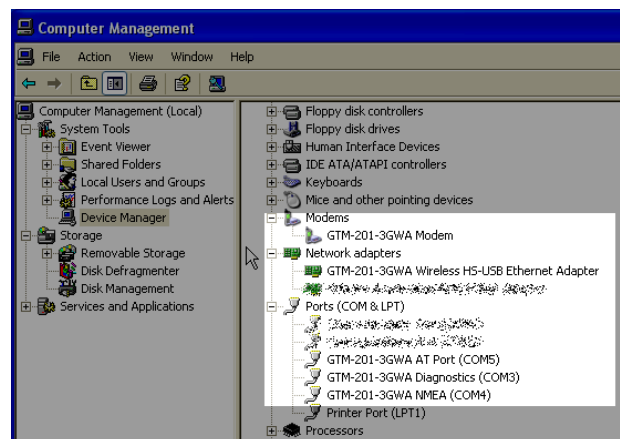
“GTM-201-3GWA Wireless HS-USB Ethernet Adapter”



Step6. Finish the all install steps. Please open “Device manager”, and you will found 5 new items in your computer.

The “GTM-201-3GWA AT Port” is a “AT command port” for GSM library.

The “GTM-201-3GWA Modem” is a Modem for dial-up to 3G/GPRS Network.



## ➤ Quick Test (Hyper Terminal)

Step1. Start → All Programs → Accessories → Communications → Hyper Terminal → Input new connection name → Click “OK” → Select “GTM-201-3GWA AT PORT” for USB or your PC serial port for RS-232 communication → Click “OK”



## ➤ Create a new modem connection on PC (for RS-232 dial-up)

Step1. Control Panel → Double-click “Phone and Modem Options” → Modem → Click “Add”

Step2. Select “Standard Modem Types” → Select “Standard 19200 bps Modem” → Click “Next”

Step3. Select your COM Port to connect the modem → Click “Next” → Click “Finish”

Step2. Please refer to the following settings

Bits per second	115200
Data bits	8
Parity	None
Stop bits	1
Flow control	None

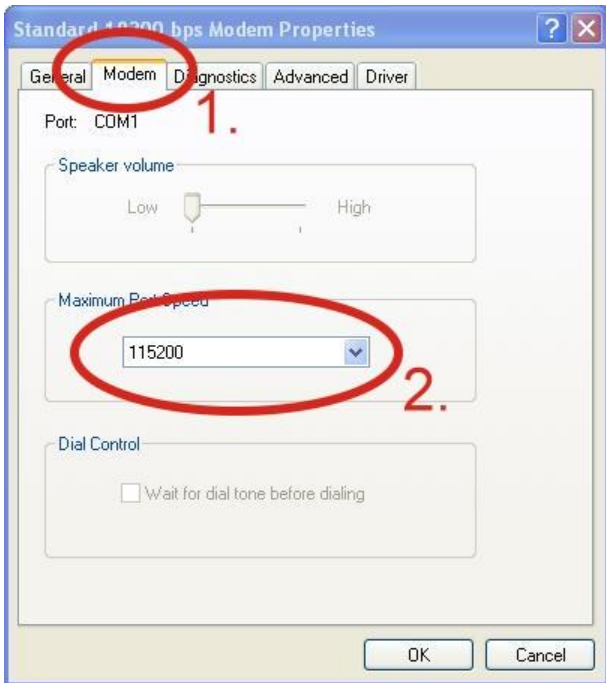
Step3. File → Properties → Settings → Click “ASCII Setup...” → Select “Echo typed character locally” → OK

Step4. Input “AT” and press “Enter”, then you will receive “AT OK”



Step4. Control Panel → Double-click “Phone and Modem Options” → Modem → Select “Standard 19200 bps Modem” → Click “Properties”

Step5. Control Panel → Double-click “Phone and Modem Options” → Modem → Select “Standard 19200 bps Modem” → Click “Properties” → Modem → Maximum Port Speed → 115200



Step6. Advanced → Extra initialization commands:

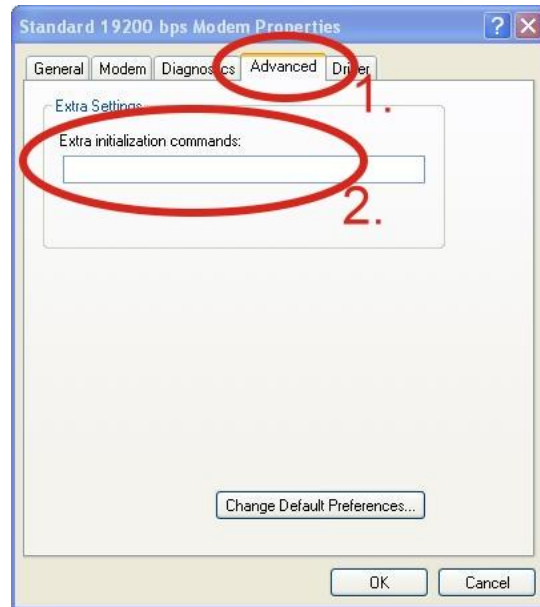
**Note:** GPRS’s APN must be provided from your Telecom. CO., LTD.

For example in Taiwan:

**AT+CGDCONT=1,"IP","INTERNET"**

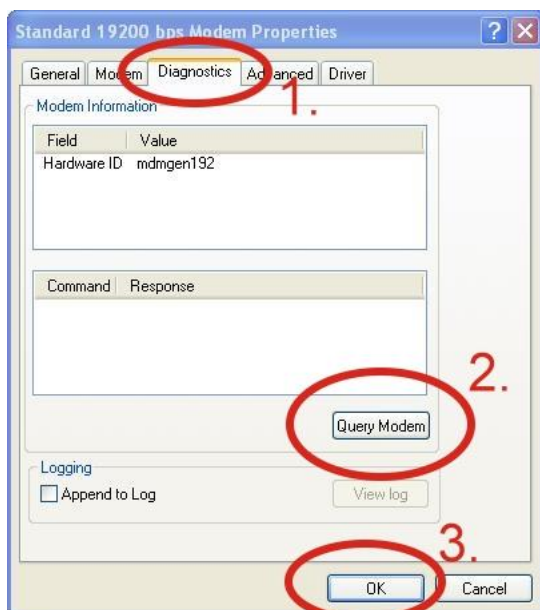
For example in China:

**AT+CGDCONT=1,"IP","CMNET"**

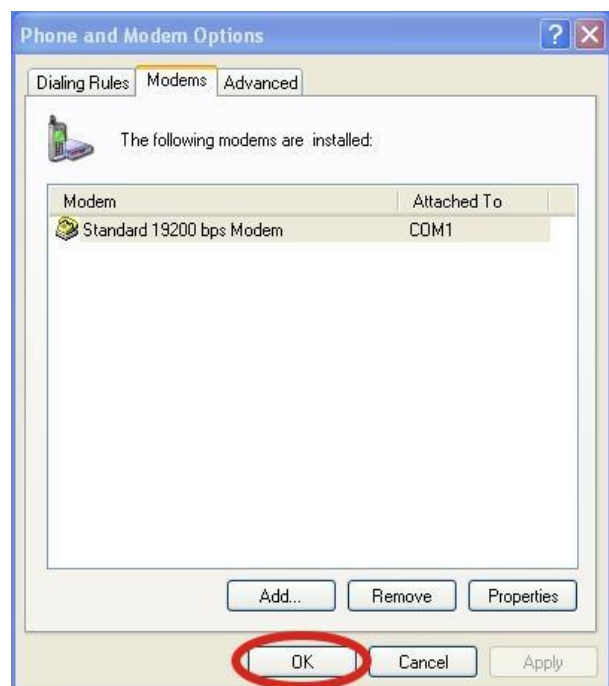


Step7. Diagnostics → Query Modem → Click “OK”

**Note:** If user queries modem that gets a **Error**, please try again.

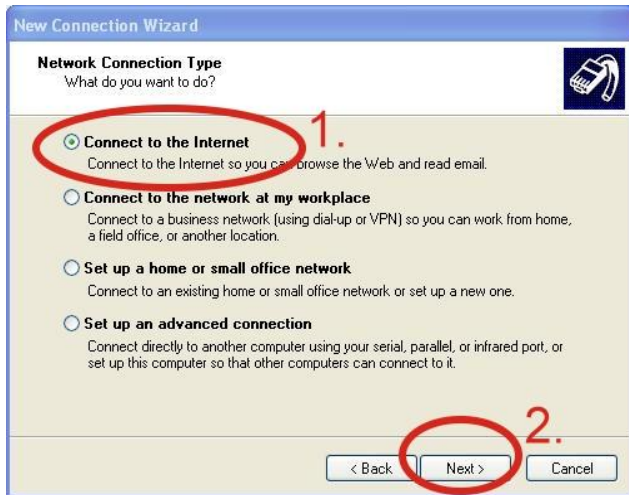


Step8. Click “OK”



➤ **Create a new dial-up on a PC**

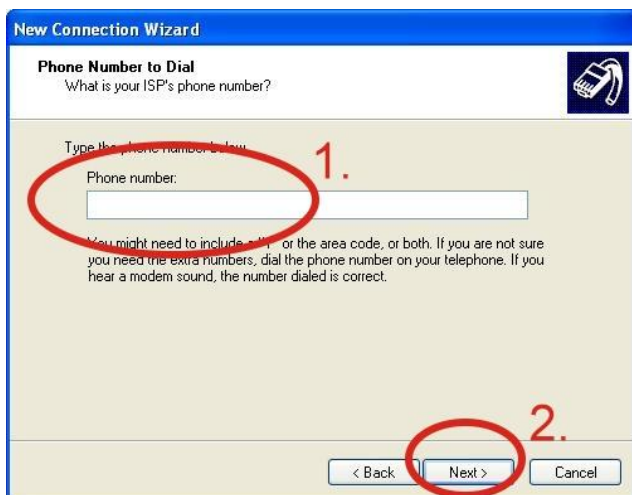
Step1. Control Panel → Network Connections → Click “Create a new connection” → Click “Next” → Select “Connect to the Internet” → Click “Next”



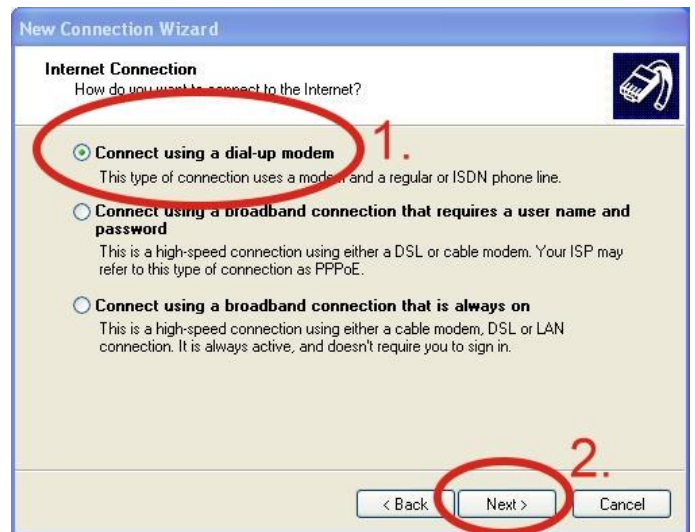
Step3. Your GPRS's name → Click “Next” → Phone Number: → Click “Next”

**Note:** Phone Number must be provided from your Telecom. CO., LTD.

**For example in Taiwan:** \*99\*\*\*1#



Step2. Select “Connect using a dial-up modem” → Click “Next”



Step4. GPRS's **User name** and GPRS's **Password** → Click “Next” → Click “Finish”

**Note:** GPRS's **User name** and GPRS's **Password** must be provided from your Telecom. CO., LTD.



Step5. Control Panel →  
 Network Connections →  
 Click “Your GPRS’s name” → File  
 → Properties → General →  
 → Click “Configure”  
 Select “GTM-201-3GWA Modem”  
 (\* Select “Standard 19200 bps Modem”  
 For RS-232)



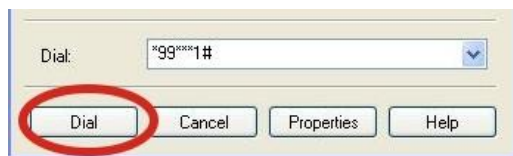
Step6. Maximum speed(bps) →  
 Select ”115200” →  
 Enable hardware flow control (Note)  
 → Click “OK”

Note :

GTM-201-3GWA	Please <b>don't</b> select “Enable hardware flow control”
--------------	---



Step7. Control Panel → Network  
 Connections → Double-Click “Your  
 GPRS’s name” → Click “Dial”



Step8. If you connect to internet  
 successfully, your toolbar has new logo



## ➤ Technical Support

1. ICP DAS Service : [service@icpdas.com](mailto:service@icpdas.com)
2. GTM-201-3GWA software Website:  
<http://m2m.icpdas.com/gtm-201-3gwa.html>